

Product datasheet for TP311920M

AP1B1 (NM_001127) Human Recombinant Protein

Product data:

Product Type:	Recombinant Proteins
Description:	Purified recombinant protein of Homo sapiens adaptor-related protein complex 1, beta 1 subunit (AP1B1), transcript variant 1, 100 µg
Species:	Human
Expression Host:	HEK293T
Expression cDNA Clone or AA Sequence:	>RC211920 representing NM_001127 Red=Cloning site Green=Tags(s)

MTDSKYFTTTKKGEIFELKAELNSDKKEKKKEAVKKVIASMTVGKDVSAFPDVVNCMQTDNLELKKLVY
LYLMNYAKSQPDMAIMAVNTFVKDCEDPNPLIRALAVRTMGCIRVDKITEYLCEPLRKCLKDEDPYVRKT
AAVCVAKLHDINAQLVEDQGFLDTLKDLSISNPMVVANAVAALSEIAESHSSNLLDLNPQSINKLLTA
LNECTEWGQIFILDCLANYMPKDDREAQSICERVTPRLSHANSVAVLSAVKVLKFMEMLSKDLDYYGTL
LKKLAPPLVTLTSAEPELQYVALRNINLIVQKRPEILKHEMKVFFVKYNDPIYVKLEKLDIMIRLASQAN
IAQVLAELKEYATEVDVDFVRKAVRAIGRAIKVEQSAERCVSTLLDLIQTQVNYVQEAIVVIKDIRK
YPNKYESVIATLCENLDSLDEPEARAAAMIWIVGEYAERIDNADELLESFLEGFHDDESTQVQLQLLTAIVK
LFLKPTETQELVQQVLSLATQSDSNPDLRDRGYIYWRLLSTDPVAAKEVLAEKPLISEETDLIEPTLL
DELICYIGTLASVYHKPPSAFVEGGRGWVHKSLLPRTASSESAESPETAPTAPPGEQPDVIPAQGDLLG
DLLNLDLGPVSGPPLATSSVQMGAVDLLGGGLDSLMDGDEPEGIGGTNFVAPPTAAVPANLGAPIGSGLS
DLFDLTSGVGTLSGSYVAPKAVWLPAMKAKGLEISGTFTRQVGSISMDLQLTNKALQVMTDFAIQFNRS
FGLAAPLQVHAPLSPNQTVESLPLSTVGSVMKMEPLNNLQVAVKNNIDVFYFSTLYPLHILFVEDGK
MDRQMFLATWKDIPNENEAQFQIRD CPLNAAASSKLQSSNIFTVAKRNVGQDMLYQSLKLTNGIWWLA
ELRIQPGNPSCTDLELSLKCRAPEVSQHVVYQAYETILKN

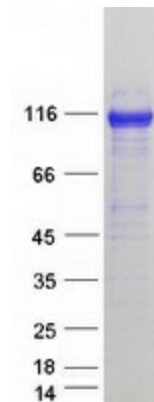
TRTRPLEQKLISEEDLAANDILDYKDDDDKV

Tag:	C-Myc/DDK
Predicted MW:	104.4 kDa
Concentration:	>0.05 µg/µL as determined by microplate BCA method
Purity:	> 80% as determined by SDS-PAGE and Coomassie blue staining
Buffer:	25 mM Tris-HCl, 100 mM glycine, pH 7.3, 10% glycerol



[View online »](#)

Preparation:	Recombinant protein was captured through anti-DDK affinity column followed by conventional chromatography steps.
Note:	For testing in cell culture applications, please filter before use. Note that you may experience some loss of protein during the filtration process.
Storage:	Store at -80°C.
Stability:	Stable for 12 months from the date of receipt of the product under proper storage and handling conditions. Avoid repeated freeze-thaw cycles.
RefSeq:	<u>NP_001118</u>
Locus ID:	162
UniProt ID:	<u>Q10567</u>
RefSeq Size:	4194
Cytogenetics:	22q12.2
RefSeq ORF:	2847
Synonyms:	ADTB1; AP105A; BAM22; CLAPB2; KIDAR
Summary:	Adaptor protein complex 1 is found at the cytoplasmic face of coated vesicles located at the Golgi complex, where it mediates both the recruitment of clathrin to the membrane and the recognition of sorting signals within the cytosolic tails of transmembrane receptors. This complex is a heterotetramer composed of two large, one medium, and one small adaptin subunit. The protein encoded by this gene serves as one of the large subunits of this complex and is a member of the adaptin protein family. This gene is a candidate meningioma gene. Alternative splicing results in multiple transcript variants. [provided by RefSeq, Oct 2009]
Protein Pathways:	Lysosome

Product images:

Coomassie blue staining of purified AP1B1 protein (Cat# [TP311920]). The protein was produced from HEK293T cells transfected with AP1B1 cDNA clone (Cat# [RC211920]) using MegaTran 2.0 (Cat# [TT210002]).