

Product datasheet for **TP311857L**

NEK7 (NM_133494) Human Recombinant Protein

Product data:

Product Type:	Recombinant Proteins
Description:	Recombinant protein of human NIMA (never in mitosis gene a)-related kinase 7 (NEK7), 1 mg
Species:	Human
Expression Host:	HEK293T
Expression cDNA Clone or AA Sequence:	>RC211857 representing NM_133494 Red =Cloning site Green =Tags(s)
	<p>MDEQSQGMQGPVPQFQPQKALRPDMGYNTLANFRIEKKIGRGQFSEVYRAACLLDGVPVALKKVQIFDL MDAKARADCIKEIDLLKQLNHPNVIKYYASFIEDNELNIVLELADAGDLSRMIKHFKKQKRLIPERTVWK YFVQLCSALEHMHSSRRVMHRDIKPANVFITATGVVKGDLGLGRFFSSKTTAAHSLVGTPIYMSPERIHE NGYNFKSDIWSLGCLLYEMAALQSPFYGDKMNLVSLCKKIEQCDYPLPSDHYSEELRQLVNMGINPDPE KRPDVTYVYDVAKRMHACTASS</p> <p>TRTRPLEQKLISEEDLAANDILDYKDDDDKV</p>
Tag:	C-Myc/DDK
Predicted MW:	34.4 kDa
Concentration:	>0.05 µg/µL as determined by microplate BCA method
Purity:	> 80% as determined by SDS-PAGE and Coomassie blue staining
Buffer:	25 mM Tris-HCl, 100 mM glycine, pH 7.3, 10% glycerol
Preparation:	Recombinant protein was captured through anti-DDK affinity column followed by conventional chromatography steps.
Note:	For testing in cell culture applications, please filter before use. Note that you may experience some loss of protein during the filtration process.
Storage:	Store at -80°C.
Stability:	Stable for 12 months from the date of receipt of the product under proper storage and handling conditions. Avoid repeated freeze-thaw cycles.
RefSeq:	<u>NP_598001</u>
Locus ID:	140609



[View online »](#)

UniProt ID: [Q8TDX7](#), [B2R8K8](#)

RefSeq Size: 1072

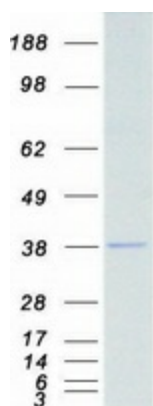
Cytogenetics: 1q31.3

RefSeq ORF: 906

Summary: NIMA-related kinases share high amino acid sequence identity with the gene product of the *Aspergillus nidulans* 'never in mitosis A' gene, which controls initiation of mitosis.[supplied by OMIM, Jul 2002]

Protein Families: Druggable Genome, Protein Kinase

Product images:



Coomassie blue staining of purified NEK7 protein (Cat# [TP311857]). The protein was produced from HEK293T cells transfected with NEK7 cDNA clone (Cat# [RC211857]) using MegaTran 2.0 (Cat# [TT210002]).