

## Product datasheet for **TP311854M**

### **RABL2A (NM\_007082) Human Recombinant Protein**

#### **Product data:**

<b>Product Type:</b>	Recombinant Proteins
<b>Description:</b>	Recombinant protein of human RAB, member of RAS oncogene family-like 2A (RABL2A), transcript variant 2, 100 µg
<b>Species:</b>	Human
<b>Expression Host:</b>	HEK293T
<b>Expression cDNA Clone or AA Sequence:</b>	>RC211854 protein sequence <b>Red</b> =Cloning site <b>Green</b> =Tags(s)  MAEDKTKPSELDQGKYDADDNVKIICLGDSAVGKSKLMERFLMDGFQPQQLSTYALTYLKHTATVDGRTI LVDFWDTAGQERFQSMHASYHKAHACIMVFDVQRKVTYRNLSTWYTELREFRPEIPCIVVANKIDADIN VTQKSFNFAKKFSLPLYFVSAADGTNVVVKLFNDAIRLAVSYKQNSQDFMDEIFQELENFSLEQEEEDVPD QEQSSSIETPSEEAASPHS  <b>TRTRPLEQKLISEEDLAANDILDYKDDDDKV</b>
<b>Tag:</b>	C-Myc/DDK
<b>Predicted MW:</b>	25.9 kDa
<b>Concentration:</b>	>0.05 µg/µL as determined by microplate BCA method
<b>Purity:</b>	> 80% as determined by SDS-PAGE and Coomassie blue staining
<b>Buffer:</b>	25 mM Tris-HCl, 100 mM glycine, pH 7.3, 10% glycerol
<b>Preparation:</b>	Recombinant protein was captured through anti-DDK affinity column followed by conventional chromatography steps.
<b>Note:</b>	For testing in cell culture applications, please filter before use. Note that you may experience some loss of protein during the filtration process.
<b>Storage:</b>	Store at -80°C.
<b>Stability:</b>	Stable for 12 months from the date of receipt of the product under proper storage and handling conditions. Avoid repeated freeze-thaw cycles.
<b>RefSeq:</b>	<u><a href="#">NP_009013</a></u>
<b>Locus ID:</b>	11159



[View online »](#)

UniProt ID: [Q9UBK7](#)

RefSeq Size: 1143

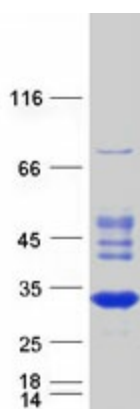
Cytogenetics: 2q14.1

RefSeq ORF: 687

**Summary:** This gene is a member of the RAB gene family which belongs to the RAS GTPase superfamily. The proteins in the family of RAS-related signaling molecules are small GTP-binding proteins that play important roles in the regulation of exocytotic and endocytotic pathways. This gene maps to the site of an ancestral telomere fusion event and may be a subtelomeric gene. Alternative splicing results in multiple transcript variants encoding different isoforms. [provided by RefSeq, Apr 2015]

**Protein Families:** Druggable Genome

### Product images:



Coomassie blue staining of purified RABL2A protein (Cat# [TP311854]). The protein was produced from HEK293T cells transfected with RABL2A cDNA clone (Cat# [RC211854]) using MegaTran 2.0 (Cat# [TT210002]).