

Product datasheet for **TP311854L**

RABL2A (NM_007082) Human Recombinant Protein

Product data:

Product Type:	Recombinant Proteins
Description:	Recombinant protein of human RAB, member of RAS oncogene family-like 2A (RABL2A), transcript variant 2, 1 mg
Species:	Human
Expression Host:	HEK293T
Expression cDNA Clone or AA Sequence:	>RC211854 protein sequence Red =Cloning site Green =Tags(s)
	<p>MAEDKTKPSELDQGKYDADDNVKIICLGDSAVGKSKLMERFLMDGFQPQQLSTYALTLYKHTATVDGRTI LVDFWDTAGQERFQSMHASYHKAHACIMVFDVQRKVTYRNLSTWYTELREFRPEIPCIVVANKIDADIN VTQKSFNFAKKFSLPLYFVSAADGTNVVVKLFNDAIRLAVSYKQNSQDFMDEIFQELENFSLEQEEEDVPD QEQSSSIETPSEEAASPHS</p> <p>TRTRPLEQKLISEEDLAANDILDYKDDDDKV</p>
Tag:	C-Myc/DDK
Predicted MW:	25.9 kDa
Concentration:	>0.05 µg/µL as determined by microplate BCA method
Purity:	> 80% as determined by SDS-PAGE and Coomassie blue staining
Buffer:	25 mM Tris-HCl, 100 mM glycine, pH 7.3, 10% glycerol
Preparation:	Recombinant protein was captured through anti-DDK affinity column followed by conventional chromatography steps.
Note:	For testing in cell culture applications, please filter before use. Note that you may experience some loss of protein during the filtration process.
Storage:	Store at -80°C.
Stability:	Stable for 12 months from the date of receipt of the product under proper storage and handling conditions. Avoid repeated freeze-thaw cycles.
RefSeq:	<u>NP_009013</u>
Locus ID:	11159



[View online »](#)

UniProt ID: [Q9UBK7](#)

RefSeq Size: 1143

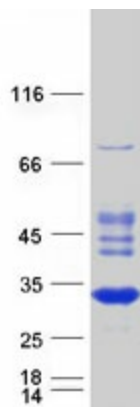
Cytogenetics: 2q14.1

RefSeq ORF: 687

Summary: This gene is a member of the RAB gene family which belongs to the RAS GTPase superfamily. The proteins in the family of RAS-related signaling molecules are small GTP-binding proteins that play important roles in the regulation of exocytotic and endocytotic pathways. This gene maps to the site of an ancestral telomere fusion event and may be a subtelomeric gene. Alternative splicing results in multiple transcript variants encoding different isoforms. [provided by RefSeq, Apr 2015]

Protein Families: Druggable Genome

Product images:



Coomassie blue staining of purified RABL2A protein (Cat# [TP311854]). The protein was produced from HEK293T cells transfected with RABL2A cDNA clone (Cat# [RC211854]) using MegaTran 2.0 (Cat# [TT210002]).