

## Product datasheet for TP311850

### SIL1 (NM\_022464) Human Recombinant Protein

#### Product data:

<b>Product Type:</b>	Recombinant Proteins
<b>Description:</b>	Recombinant protein of human SIL1 homolog, endoplasmic reticulum chaperone ( <i>S. cerevisiae</i> ) (SIL1), transcript variant 2, 20 µg
<b>Species:</b>	Human
<b>Expression Host:</b>	HEK293T
<b>Expression cDNA Clone or AA Sequence:</b>	>RC211850 representing NM_022464 <b>Red</b> =Cloning site <b>Green</b> =Tags(s)
	<p>MAPQSLPSSRMAPLGMMLLGLLMAACFTFCLSHQNLKEFALTNPEKSSTKETERKETKAEHEELDAEVLEVF            HPTHEWQALQPGQAVPAGSHVRLNLQTGEREAKLQYEDKFRNNLKGKRLDINTNTYTSQDLKSALAKFKE            GAEMESSKEDKARQAEVKRFRPIEELKKDFDELNVVIETDMQIMVRLINKFNSSSSSLEEKIAALFDLE            YVHQM DNAQDLLSFGGLQVINGLNSTEPLVKEYAAFVLGAAFSSNPKVQVEAIEGGALQKLLVILATE            QPLTAKKKVLFALCSLLRHFPYAQRQFLKLGGLQVLR TLVQEKGTEVLAVRVVTLTYDLVTEKMF AEEEEA            ELTQEMSPEKLQYRQVHLLPGLWEQGWCEITAHLLALPEHDAREKVLQTLGVLLTTCRDRYRQDPQLGR            TLASLQAEYQVLASLELQDGEDEGYFQELLGSVNSLLKELR</p> <p><b>TRTRPLEQKLISEEDLAANDILDYKDDDDKV</b></p>
<b>Tag:</b>	C-Myc/DDK
<b>Predicted MW:</b>	48.8 kDa
<b>Concentration:</b>	>0.05 µg/µL as determined by microplate BCA method
<b>Purity:</b>	> 80% as determined by SDS-PAGE and Coomassie blue staining
<b>Buffer:</b>	25 mM Tris-HCl, 100 mM glycine, pH 7.3, 10% glycerol
<b>Preparation:</b>	Recombinant protein was captured through anti-DDK affinity column followed by conventional chromatography steps.
<b>Note:</b>	For testing in cell culture applications, please filter before use. Note that you may experience some loss of protein during the filtration process.
<b>Storage:</b>	Store at -80°C.
<b>Stability:</b>	Stable for 12 months from the date of receipt of the product under proper storage and handling conditions. Avoid repeated freeze-thaw cycles.



[View online >](#)

RefSeq: [NP\\_071909](#)

Locus ID: 64374

UniProt ID: [Q9H173](#), [A0A0S2Z6B4](#)

RefSeq Size: 1815

Cytogenetics: 5q31.2

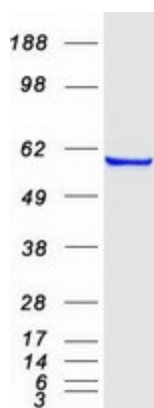
RefSeq ORF: 1383

Synonyms: BAP; MSS; ULG5

**Summary:** This gene encodes a resident endoplasmic reticulum (ER), N-linked glycoprotein with an N-terminal ER targeting sequence, 2 putative N-glycosylation sites, and a C-terminal ER retention signal. This protein functions as a nucleotide exchange factor for another unfolded protein response protein. Mutations in this gene have been associated with Marinesco-Sjogren syndrome. Alternate transcriptional splice variants have been characterized. [provided by RefSeq, Jul 2008]

**Protein Families:** Protease, Secreted Protein, Transmembrane

### Product images:



Coomassie blue staining of purified SIL1 protein (Cat# TP311850). The protein was produced from HEK293T cells transfected with SIL1 cDNA clone (Cat# [RC211850]) using MegaTran 2.0 (Cat# [TT210002]).