

Product datasheet for TP311828

FBLIM1 (NM_001024216) Human Recombinant Protein

Product data:

| | |
|---------------------------------------|---|
| Product Type: | Recombinant Proteins |
| Description: | Purified recombinant protein of Homo sapiens filamin binding LIM protein 1 (FBLIM1), transcript variant 3, 20 µg |
| Species: | Human |
| Expression Host: | HEK293T |
| Expression cDNA Clone or AA Sequence: | >RC211828 representing NM_001024216 Red =Cloning site Green =Tags(s) |
| | <p>MASKPEKRVASSVFITLAPPRRDVAVAEVVRQAVCEARRGRPWEAPAPMKTPEAGLAGRPSWTTTPGRAA ATVPAAPMQLFNGDICAFCHKTVSPRELAVEAMKRQYHAQCFTCRTRRQLAGQSFYQKDGRPLCEPCYQ DTLERCGKCGEVVRDHIIRALGQAFHPSCFTCVTCARCIGDESFALGSQNEVYCLDDFYRKFAPVCSICE NPIIPRDGKDAFKIECMGRNFHENCYRCEDCRILLSVEPTDQGCYPLNNHLFCKPCHVKRSAAGCC</p> <p>TRTRPLEQKLISEEDLAANDILDYKDDDDKV</p> |
| Tag: | C-Myc/DDK |
| Predicted MW: | 30.6 kDa |
| Concentration: | >0.05 µg/µL as determined by microplate BCA method |
| Purity: | > 80% as determined by SDS-PAGE and Coomassie blue staining |
| Buffer: | 25 mM Tris-HCl, 100 mM glycine, pH 7.3, 10% glycerol |
| Preparation: | Recombinant protein was captured through anti-DDK affinity column followed by conventional chromatography steps. |
| Note: | For testing in cell culture applications, please filter before use. Note that you may experience some loss of protein during the filtration process. |
| Storage: | Store at -80°C. |
| Stability: | Stable for 12 months from the date of receipt of the product under proper storage and handling conditions. Avoid repeated freeze-thaw cycles. |
| RefSeq: | NP_001019387 |
| Locus ID: | 54751 |



[View online »](#)

UniProt ID: [Q8WUP2](#)

RefSeq Size: 2793

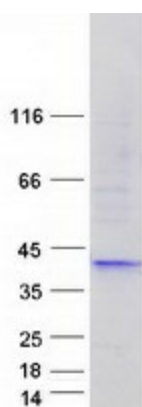
Cytogenetics: 1p36.21

RefSeq ORF: 828

Synonyms: CAL; FBLP-1; FBLP1

Summary: This gene encodes a protein with an N-terminal filamin-binding domain, a central proline-rich domain, and, multiple C-terminal LIM domains. This protein localizes at cell junctions and may link cell adhesion structures to the actin cytoskeleton. This protein may be involved in the assembly and stabilization of actin-filaments and likely plays a role in modulating cell adhesion, cell morphology and cell motility. This protein also localizes to the nucleus and may affect cardiomyocyte differentiation after binding with the CSX/NKX2-5 transcription factor. Alternative splicing results in multiple transcript variants encoding different isoforms. [provided by RefSeq, Jul 2008]

Product images:



Coomassie blue staining of purified FBLIM1 protein (Cat# TP311828). The protein was produced from HEK293T cells transfected with FBLIM1 cDNA clone (Cat# [RC211828]) using MegaTran 2.0 (Cat# [TT210002]).