

## Product datasheet for **TP311827M**

### **SPRR2B (NM\_001017418) Human Recombinant Protein**

#### Product data:

|                                       |   |
|---------------------------------------|---|
| Product Type:                         | Recombinant Proteins  |
| Description:                          | Recombinant protein of human small proline-rich protein 2B (SPRR2B), 100 µg   |
| Species:                              | Human   |
| Expression Host:                      | HEK293T   |
| Expression cDNA Clone or AA Sequence: | >RC211827 protein sequence<br><b>Red</b> =Cloning site <b>Green</b> =Tags(s)<br><br>MSYQQQQCKQPCQPPVCPTPKCEPCPPPKCEPCPPPKCPQPCPPQQCQQKYPPVTPSPPCQSKYP<br>PK<br>SK<br><br><b>TRTRPLEQKLISEEDLAANDILDYKDDDDKV</b> |
| Tag:                                  | C-Myc/DDK   |
| Predicted MW:                         | 7.8 kDa   |
| Concentration:                        | >0.05 µg/µL as determined by microplate BCA method  |
| Purity:                               | > 80% as determined by SDS-PAGE and Coomassie blue staining   |
| Buffer:                               | 25 mM Tris-HCl, 100 mM glycine, pH 7.3, 10% glycerol  |
| Preparation:                          | Recombinant protein was captured through anti-DDK affinity column followed by conventional chromatography steps.  |
| Note:                                 | For testing in cell culture applications, please filter before use. Note that you may experience some loss of protein during the filtration process.  |
| Storage:                              | Store at -80°C.   |
| Stability:                            | Stable for 12 months from the date of receipt of the product under proper storage and handling conditions. Avoid repeated freeze-thaw cycles.   |
| RefSeq:                               | <u><a href="#">NP_001017418</a></u>   |
| Locus ID:                             | 6701  |
| UniProt ID:                           | <u><a href="#">P35325</a></u>   |
| RefSeq Size:                          | 662   |

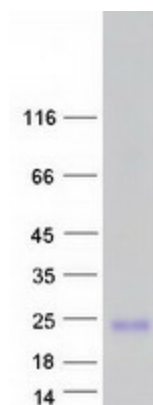

[View online »](#)

**Cytogenetics:** 1q21.3

**RefSeq ORF:** 216

**Summary:** Cross-linked envelope protein of keratinocytes. It is a keratinocyte protein that first appears in the cell cytosol, but ultimately becomes cross-linked to membrane proteins by transglutaminase. All that results in the formation of an insoluble envelope beneath the plasma membrane.[UniProtKB/Swiss-Prot Function]

### Product images:



Coomassie blue staining of purified SPRR2B protein (Cat# [TP311827]). The protein was produced from HEK293T cells transfected with SPRR2B cDNA clone (Cat# [RC211827]) using MegaTran 2.0 (Cat# [TT210002]).