

Product datasheet for **TP311824L**

GRK7 (NM_139209) Human Recombinant Protein

Product data:

Product Type:	Recombinant Proteins
Description:	Recombinant protein of human G protein-coupled receptor kinase 7 (GRK7), 1 mg
Species:	Human
Expression Host:	HEK293T
Expression cDNA Clone or AA Sequence:	>RC211824 representing NM_139209 Red =Cloning site Green =Tags(s)

MVDMGALDNLIAANTAYLQARKPSDCDSKELQRRRRSLALPGLQGCAELRQKLSLNFHSLCEQQPIGRRLF
RDFLATVPTFRKAATFLEDVQNWELAEEGPTKDSALQGLVATCASAPAPGNPQPFLSQAVATKCAATTE
EERVAAVTLAKAEAMAFLQEPPFKDFVTSAFYDKFLQWKLFEVSDKYFTEFRVLGKGGFGEVCAVQV
KNTGKMYACKKLDKKRLKKKGGEKMALLEKEILEKVSSPFIVSLAYAFESKTHLCLVMSLMNGGDLKFHI
YNVGTRGLDMSRVIFYSAQIACGMLHLHELGIYVRDMKPENVLDDLDGNCRLSDLGLAVEMKGGKPKITQR
AGTNGYMAPEILMEKVSYSYPVDWFAMGCSIYEMVAGRTPFKDYKEKVSKEKDLKQRTLQDEVKFKQHDNFT
EEAKDICRLFLAKKPEQRLGSREKSDDPKHHFFKTINFPRLEAGLIEPPFVDPSPVYAKDIAEIDDFS
EVRGVEFDDKDKQFFKNFATGAVPIAWQEEIETGLFEELNDPNRPTGCEEGNSSKSGVCLLL

SGPTRRRLEQKLISEEDLAANDILDYKDDDDKV

Tag:	C-Myc/DDK
Predicted MW:	62 kDa
Concentration:	>0.05 µg/µL as determined by microplate BCA method
Purity:	> 80% as determined by SDS-PAGE and Coomassie blue staining
Buffer:	25 mM Tris-HCl, 100 mM glycine, pH 7.3, 10% glycerol
Preparation:	Recombinant protein was captured through anti-DDK affinity column followed by conventional chromatography steps.
Note:	For testing in cell culture applications, please filter before use. Note that you may experience some loss of protein during the filtration process.
Storage:	Store at -80°C.
Stability:	Stable for 12 months from the date of receipt of the product under proper storage and handling conditions. Avoid repeated freeze-thaw cycles.



[View online »](#)

RefSeq: [NP_631948](#)

Locus ID: 131890

UniProt ID: [Q8WTQ7](#)

RefSeq Size: 1746

Cytogenetics: 3q23

RefSeq ORF: 1659

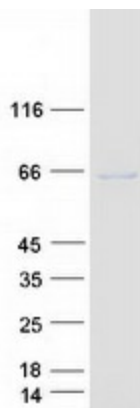
Synonyms: GPRK7

Summary: This gene encodes a member of the guanine nucleotide-binding protein (G protein)-coupled receptor kinase subfamily of the Ser/Thr protein kinase family. It is specifically expressed in the retina and the encoded protein has been shown to phosphorylate cone opsins and initiate their deactivation. [provided by RefSeq, Jul 2008]

Protein Families: Druggable Genome, Protein Kinase

Protein Pathways: Chemokine signaling pathway, Endocytosis

Product images:



Coomassie blue staining of purified GRK7 protein (Cat# [TP311824]). The protein was produced from HEK293T cells transfected with GRK7 cDNA clone (Cat# [RC211824]) using MegaTran 2.0 (Cat# [TT210002]).