

Product datasheet for **TP311810M**

RASGEF1C (NM_175062) Human Recombinant Protein

Product data:

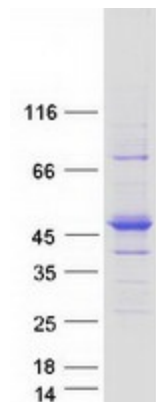
Product Type:	Recombinant Proteins
Description:	Recombinant protein of human RasGEF domain family, member 1C (RASGEF1C), 100 µg
Species:	Human
Expression Host:	HEK293T
Expression cDNA Clone or AA Sequence:	>RC211810 representing NM_175062 Red =Cloning site Green =Tags(s)
	MPQTLASADMVTPGSLSPPTTEPTDGEQAGQPLLDGAPSSASLETLIQHLVPTADYYPEKAYIFTLLSS RLFIEPRELLARVCHLCIEQQQLDKPVLDKARVRKFGPKLLQLLAEWTTETFPDFQEESTIGHLKDVVGR IAPCDEAYRKRMHQLLQALHQKLAALRQGPEGLVGADKPISYRTKPPASIHRELLGVCSDPYTLAQQLTH VELERLRHIGPEEFVQAFVNKDPLASTKPCFSDKTSNLEAYVKWFNRLCYLVATEICMPAKKKQRAQVIE FFIDVARECFNIGNFNLSLMAISGMNMSPVSRLKKTWAKVVRTAKFFILEHQMDPTGNFCNYRTALRGAH RSLTAHSSREKIVIPFFSLLIKDIYFLNEGCANRLPNGHVNFKEFLELAKQVGEFITWKQVECPFEQDAS ITHYLYTAPIFSEDGLYLASYESEPENQTEKERWKALRSSILGKT
	TRTRPLEQKLISEEDLAANDILDYKDDDDKV
Tag:	C-Myc/DDK
Predicted MW:	52.7 kDa
Concentration:	>0.05 µg/µL as determined by microplate BCA method
Purity:	> 80% as determined by SDS-PAGE and Coomassie blue staining
Buffer:	25 mM Tris-HCl, 100 mM glycine, pH 7.3, 10% glycerol
Preparation:	Recombinant protein was captured through anti-DDK affinity column followed by conventional chromatography steps.
Note:	For testing in cell culture applications, please filter before use. Note that you may experience some loss of protein during the filtration process.
Storage:	Store at -80°C.
Stability:	Stable for 12 months from the date of receipt of the product under proper storage and handling conditions. Avoid repeated freeze-thaw cycles.
RefSeq:	<u>NP_778232</u>



[View online »](#)

Locus ID:	255426
UniProt ID:	<u>Q8N431</u>
RefSeq Size:	2216
Cytogenetics:	5q35.3
RefSeq ORF:	1398
Summary:	Guanine nucleotide exchange factor (GEF).[UniProtKB/Swiss-Prot Function]

Product images:



Coomassie blue staining of purified RASGEF1C protein (Cat# [TP311810]). The protein was produced from HEK293T cells transfected with RASGEF1C cDNA clone (Cat# [RC211810]) using MegaTran 2.0 (Cat# [TT210002]).