

## Product datasheet for **TP311810L**

### **RASGEF1C (NM\_175062) Human Recombinant Protein**

#### **Product data:**

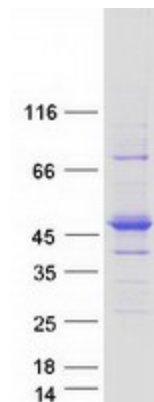
<b>Product Type:</b>	Recombinant Proteins
<b>Description:</b>	Recombinant protein of human RasGEF domain family, member 1C (RASGEF1C), 1 mg
<b>Species:</b>	Human
<b>Expression Host:</b>	HEK293T
<b>Expression cDNA Clone or AA Sequence:</b>	>RC211810 representing NM_175062 <b>Red</b> =Cloning site <b>Green</b> =Tags(s)
	MPQTLASADMVTPGSLSPPTTEPTDGEQAGQPLLDGAPSSASLETLIQHLVPTADYYPEKAYIFTLLSS RLFIEPRELLARVCHLCIEQQQLDKPVLDKARVRKFGPKLLQLLAEWTTETFPDFQEESTIGHLKDVVGR IAPCDEAYRKRMHQLLQALHQKLAALRQGPEGLVGADKPISYRTKPPASIHRELLGVCSDPYTLAQQLTH VELERLRHIGPEEFVQAFVNKDPLASTKPCFSDKTSNLEAYVKWFNRLCYLVATEICMPAKKKQRAQVIE FFIDVARECFNIGNFNLSLMAISGMNMSPVSRLKKTWAKVVRTAKFFILEHQMDPTGNFCNYRTALRGAHH RSLTAHSSREKIVIPFFSLLIKDIYFLNEGCANRLPNGHVNFEKFLELAKQVGEFITWKQVECPFEQDAS ITHYLYTAPIFSEDGLYLASYESEPENQTEKERWKALRSSILGKT
	<b>TRTRPLEQKLISEEDLAANDILDYKDDDDKV</b>
<b>Tag:</b>	C-Myc/DDK
<b>Predicted MW:</b>	52.7 kDa
<b>Concentration:</b>	>0.05 µg/µL as determined by microplate BCA method
<b>Purity:</b>	> 80% as determined by SDS-PAGE and Coomassie blue staining
<b>Buffer:</b>	25 mM Tris-HCl, 100 mM glycine, pH 7.3, 10% glycerol
<b>Preparation:</b>	Recombinant protein was captured through anti-DDK affinity column followed by conventional chromatography steps.
<b>Note:</b>	For testing in cell culture applications, please filter before use. Note that you may experience some loss of protein during the filtration process.
<b>Storage:</b>	Store at -80°C.
<b>Stability:</b>	Stable for 12 months from the date of receipt of the product under proper storage and handling conditions. Avoid repeated freeze-thaw cycles.
<b>RefSeq:</b>	<u>NP_778232</u>



[View online »](#)

Locus ID:	255426
UniProt ID:	<u><a href="#">Q8N431</a></u>
RefSeq Size:	2216
Cytogenetics:	5q35.3
RefSeq ORF:	1398
Summary:	Guanine nucleotide exchange factor (GEF).[UniProtKB/Swiss-Prot Function]

### Product images:



Coomassie blue staining of purified RASGEF1C protein (Cat# [TP311810]). The protein was produced from HEK293T cells transfected with RASGEF1C cDNA clone (Cat# [RC211810]) using MegaTran 2.0 (Cat# [TT210002]).