

Product datasheet for **TP311801**

SEC14L1 (NM_003003) Human Recombinant Protein

Product data:

Product Type:	Recombinant Proteins
Description:	Recombinant protein of human SEC14-like 1 (<i>S. cerevisiae</i>) (SEC14L1), transcript variant 1, 20 µg
Species:	Human
Expression Host:	HEK293T
Expression cDNA	>RC211801 representing NM_003003
Clone or AA Sequence:	Red=Cloning site Green=Tags(s)

MVQKYQSPVRVYKYPFELIMAAYERRFPTCLIPMFVGS DTVNEFKSEDGAIHVIERRCKLDVDAPRLK
KIAGVDYVYFVQKNSLNSRERTLHIEAYNETFSNRVIINEHCCYTVHPENEDWTCFEQSASLDIKSFFGF
ESTVEKIAMKQYTSNIKKGKEIIEYLRQLEEEGITFVPRWSPSITPSSETSSSSKKQAASMAVVIPE
AALKEGLSGDALSSPSAPEPVVGT PDDKLDADYIKRYLGDLTPLQESCLIRLRQWLQETHKGKIPKDEHI
LRFLRARDFNIDKAREIMCQSLTWRKQH QVDYILETWTTPQVLQDYAGGWHHHDKDGRPLYVLR LGQMD
TKGLVRALGEEALLRYVLSINEEGLRRCEENTKVFGRPISWTC LVDLEGLNMRHLWRPGVKALLRIIEV
VEANYPETLGRLLILRAPRVFVLWTLVSPFIDDNTRRKFLIYAGNDYQGGGLLDYIDKEIIPDFLSGE
CMCEVPEGGLVPKSLYRTAELENE DLKLWTETIYQSASVFKGAPHEILIQIVDASSVITWDFDVCKGDI
VFNIYHSKRSPQPPKKDSLGAHSITSPGGNNVQLIDK VWQLGRDYSMVESPLICKEGESVQGSHTVTRWPG
FYILQWKFHSMPCAASSLPRVDDVLASLQVSSHCKKVMYYTEVIGSEDFRGSMTSLESSHSGFSQLSAA
TTSSSQSHSSSMISR

TRTRPLEQKLISEEDLAANDILDYKDDDDKV

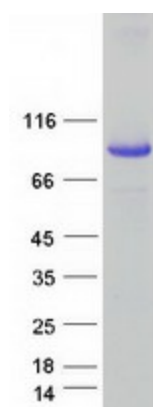
Tag:	C-Myc/DDK
Predicted MW:	81.1 kDa
Concentration:	>0.05 µg/µL as determined by microplate BCA method
Purity:	> 80% as determined by SDS-PAGE and Coomassie blue staining
Buffer:	25 mM Tris-HCl, 100 mM glycine, pH 7.3, 10% glycerol
Preparation:	Recombinant protein was captured through anti-DDK affinity column followed by conventional chromatography steps.
Note:	For testing in cell culture applications, please filter before use. Note that you may experience some loss of protein during the filtration process.
Storage:	Store at -80°C.



[View online »](#)

Stability:	Stable for 12 months from the date of receipt of the product under proper storage and handling conditions. Avoid repeated freeze-thaw cycles.
RefSeq:	<u>NP_002994</u>
Locus ID:	6397
UniProt ID:	<u>Q92503</u>
RefSeq Size:	5434
Cytogenetics:	17q25.2-q25.3
RefSeq ORF:	2145
Synonyms:	PRELID4A; SEC14L
Summary:	The protein encoded by this gene belongs to the SEC14 cytosolic factor family. It has similarity to yeast SEC14 and to Japanese flying squid RALBP which suggests a possible role of the gene product in an intracellular transport system. Multiple alternatively spliced transcript variants have been found for this gene; some variants represent read-through transcripts that include exons from the upstream gene C17orf86. [provided by RefSeq, Feb 2011]

Product images:



Coomassie blue staining of purified SEC14L1 protein (Cat# TP311801). The protein was produced from HEK293T cells transfected with SEC14L1 cDNA clone (Cat# [RC211801]) using MegaTran 2.0 (Cat# [TT210002]).