

Product datasheet for TP311771

MARCH8 (NM_001002265) Human Recombinant Protein

Product data:

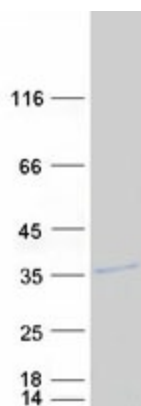
| | |
|---------------------------------------|--|
| Product Type: | Recombinant Proteins |
| Description: | Recombinant protein of human membrane-associated ring finger (C3HC4) 8 (MARCH8), transcript variant 6, 20 µg |
| Species: | Human |
| Expression Host: | HEK293T |
| Expression cDNA Clone or AA Sequence: | >RC211771 representing NM_001002265 Red =Cloning site Green =Tags(s) |
| | MSMPLHQISAIPSQDAISARVYRSKTKEKEREEQNEKTLGHFMSHSSNISKAGSPPSASAPAPVSSFRT SITPSSQDICRICHCEGDDESPLITPCHCTGSLHFVHQAQLQWIKSSDTRCCELCKYEFIMETKLKPLR KWEKLQMTSSERRKIMCSVTFHVIATCVVWSLYVLIDRTAEEIKQGQATGILEWPFWTKLVVAIGFTG GLLFMYVQCKVYVQLWKRLKAYNRVIYVQNCPETSCKKNIFEKSPLTEPNFENKHGHGICHSDTNSSCCTE PEDTGAEIIHV |
| | TR TRPLEQKLISEEDLAANDILDYKDDDDKV |
| Tag: | C-Myc/DDK |
| Predicted MW: | 32.8 kDa |
| Concentration: | >0.05 µg/µL as determined by microplate BCA method |
| Purity: | > 80% as determined by SDS-PAGE and Coomassie blue staining |
| Buffer: | 25 mM Tris-HCl, 100 mM glycine, pH 7.3, 10% glycerol |
| Preparation: | Recombinant protein was captured through anti-DDK affinity column followed by conventional chromatography steps. |
| Note: | For testing in cell culture applications, please filter before use. Note that you may experience some loss of protein during the filtration process. |
| Storage: | Store at -80°C. |
| Stability: | Stable for 12 months from the date of receipt of the product under proper storage and handling conditions. Avoid repeated freeze-thaw cycles. |
| RefSeq: | NP_001002265 |
| Locus ID: | 220972 |



[View online »](#)

| | |
|-------------------|--|
| UniProt ID: | Q5T0T0 |
| RefSeq Size: | 2604 |
| Cytogenetics: | 10q11.21-q11.22 |
| RefSeq ORF: | 873 |
| Synonyms: | c-MIR; MARCH-VIII; MIR; RNF178 |
| Summary: | MARCH8 is a member of the MARCH family of membrane-bound E3 ubiquitin ligases (EC 6.3.2.19). MARCH enzymes add ubiquitin (see MIM 191339) to target lysines in substrate proteins, thereby signaling their vesicular transport between membrane compartments. MARCH8 induces the internalization of several membrane glycoproteins (Goto et al., 2003 [PubMed 12582153]; Bartee et al., 2004 [PubMed 14722266]).[supplied by OMIM, Apr 2010] |
| Protein Families: | Druggable Genome, Transmembrane |

Product images:



Coomassie blue staining of purified MARCH8 protein (Cat# TP311771). The protein was produced from HEK293T cells transfected with MARCH8 cDNA clone (Cat# [RC211771]) using MegaTran 2.0 (Cat# [TT210002]).