

Product datasheet for **TP311690L**

Kv beta 2 (KCNAB2) (NM_003636) Human Recombinant Protein

Product data:

Product Type: Recombinant Proteins

Description: Recombinant protein of human potassium voltage-gated channel, shaker-related subfamily, beta member 2 (KCNAB2), transcript variant 1, 1 mg

Species: Human

Expression Host: HEK293T

Expression cDNA Clone or AA Sequence: >RC211690 protein sequence
Red=Cloning site **Green**=Tags(s)

MYPESTTGSPARLSLRQTGSPGMIYSTRYGSPKRQLQFYRNLGKSGLRVSLGLGTWTFGGQITDEMAE
QLMTLAYDNGINLFDTAEVYAAGKAEVVLGNIKKKGWRRSSLVITTKIFWGGKAETERGLSRKHIIIEGL
KASLERLQLEYVDVVFANRPDPNTPMEETVRAMTHVINQGMAMYWGTSRWSSMEIMEAYSVARQFNLTTP
ICEQAEYHMFQREKVEVQLPELFHKIGVGAMTWSPLACGIVSGKYDSGIPPYSRSLKGYQWLKDKILSE
EGRRQAKLKELQAIAERLGCTLPQLAIAWCLRNEGSSVLLGASNADQLMENIGAIQVLPKLSSSIIHE
IDSILGNKPYSKKDYRS

TRTRPLEQKLISEEDLAANDILDYKDDDDKV

Tag: C-Myc/DDK

Predicted MW: 40.8 kDa

Concentration: >0.05 µg/µL as determined by microplate BCA method

Purity: > 80% as determined by SDS-PAGE and Coomassie blue staining

Buffer: 25 mM Tris-HCl, 100 mM glycine, pH 7.3, 10% glycerol

Preparation: Recombinant protein was captured through anti-DDK affinity column followed by conventional chromatography steps.

Note: For testing in cell culture applications, please filter before use. Note that you may experience some loss of protein during the filtration process.

Storage: Store at -80°C.

Stability: Stable for 12 months from the date of receipt of the product under proper storage and handling conditions. Avoid repeated freeze-thaw cycles.

RefSeq: [NP_003627](#)



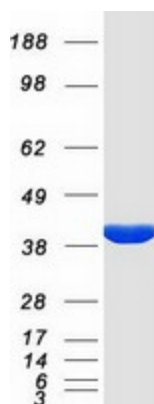
[View online »](#)

Locus ID:	8514
UniProt ID:	Q13303 , A1PR14
RefSeq Size:	4224
Cytogenetics:	1p36.31
RefSeq ORF:	1101
Synonyms:	AKR6A5; HKvbeta2; HKvbeta2.1; HKvbeta2.2; KCNA2B; KV-BETA-2

Summary: Voltage-gated potassium (Kv) channels represent the most complex class of voltage-gated ion channels from both functional and structural standpoints. Their diverse functions include regulating neurotransmitter release, heart rate, insulin secretion, neuronal excitability, epithelial electrolyte transport, smooth muscle contraction, and cell volume. Four sequence-related potassium channel genes - shaker, shaw, shab, and shal - have been identified in *Drosophila*, and each has been shown to have human homolog(s). This gene encodes a member of the potassium channel, voltage-gated, shaker-related subfamily. This member is one of the beta subunits, which are auxiliary proteins associating with functional Kv-alpha subunits. This member alters functional properties of the KCNA4 gene product. Alternative splicing of this gene results in multiple transcript variants encoding distinct isoforms. [provided by RefSeq, Dec 2010]

Protein Families: Druggable Genome, Ion Channels: Other

Product images:



Coomassie blue staining of purified KCNAB2 protein (Cat# [TP311690]). The protein was produced from HEK293T cells transfected with KCNAB2 cDNA clone (Cat# [RC211690]) using MegaTran 2.0 (Cat# [TT210002]).