

Product datasheet for **TP311676M**

PKC mu (PRKD1) (NM_002742) Human Recombinant Protein

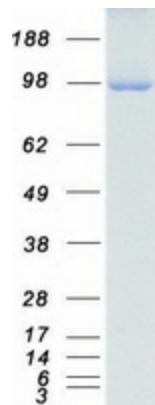
Product data:

Product Type:	Recombinant Proteins
Description:	Recombinant protein of human protein kinase D1 (PRKD1), 100 µg
Species:	Human
Expression Host:	HEK293T
Expression cDNA Clone or AA Sequence:	>RC211676 representing NM_002742 Red =Cloning site Green =Tags(s)
	<p>MSAPPVLRPPSPLLVAIAAAAAAAAAALVPGSGPGPAPFLAPVAAPVGGISFHLQIGLSREPVLLLQDSSG DYSLAHVREMACSIVDQKFPECGFYGYMYDKILLFRHDPTSENILQLVKAASDIQEGDLIEVLSASATFE DFQIRPHALFVHSYRAPAFCDHCGEMLWGLVRQGLKCEGCLNYHKRCAFKIPNNCSGVRRRRLSNVSLT GVSTIRTSAPDEPLLQKSPSEFIGREKRSNSQSYIGRPIHLDKILMSKVVPHTFVIHSYTR PTVCQYCKLLKGLFRQGLQCKDCRFNCHKRCAPKVPNNCLGEVTINGDLLSPGAESDVMEEGSDDNDS ERNSGLMDDMEEAMVQDAEMAMAECQNDSGEMQDPDPDHEDANRTISPSTSNNIPLMRVVQSVKHTKRKS STVMKEGWMVHYTSKDTLRKRHYWRLDSKCITLQNDTGSRYEKEIPLSEILSLEPVKTSALIPNGANPH CFEITANVYVYVGENVNPSSPSPNNSVLTSGVGADVARMWEIAIQHALMPVIPKGSSVGTGTNLHRDI SVSISVSNQCQIQENVDISTVYQIFPDEVLGSGQFGIVYGGKHKRKTGRDVAIKIIDKLRFPKQESQLRNE VAILQNLHHPGWNLECMFETPERVFVMEKLGDMLEMILSSEKGRLEPHITKFLITQILVALRHLHFK NIVHCDLKPENVLLASADPFQVKLCDFGFARIIGKSFRRSVVGTTPAYLAPEVLRNKGYNRSLDMWVSVG VIIYVSLSGTFPFNEDEDIHDQIQNAAFMYPPNPWKEISHEAIDLINLLQVKMRKRYSDKTLSPWLQ DYQTWLDRLECKIGERYITHESDDLWEKYAGEQGLQYPTHLINPSASHSDTPETEETEMKALGERVS IL</p> <p>TRTRPLEQKLISEEDLAANDILDYKDDDDKV</p>
Tag:	C-Myc/DDK
Predicted MW:	101.5 kDa
Concentration:	>0.05 µg/µL as determined by microplate BCA method
Purity:	> 80% as determined by SDS-PAGE and Coomassie blue staining
Buffer:	25 mM Tris-HCl, 100 mM glycine, pH 7.3, 10% glycerol
Preparation:	Recombinant protein was captured through anti-DDK affinity column followed by conventional chromatography steps.



[View online »](#)

Note:	For testing in cell culture applications, please filter before use. Note that you may experience some loss of protein during the filtration process.
Storage:	Store at -80°C.
Stability:	Stable for 12 months from the date of receipt of the product under proper storage and handling conditions. Avoid repeated freeze-thaw cycles.
RefSeq:	NP_002733
Locus ID:	5587
UniProt ID:	Q15139
RefSeq Size:	3742
Cytogenetics:	14q12
RefSeq ORF:	2736
Synonyms:	CHDED; PKC-MU; PKCM; PKD; PRKCM
Summary:	The protein encoded by this gene is a serine/threonine protein kinase involved in many cellular processes, including Golgi body membrane integrity and transport, cell migration and differentiation, MAPK8/JNK1 and Ras pathway signaling, MAPK1/3 (ERK1/2) pathway signaling, cell survival, and regulation of cell shape and adhesion. [provided by RefSeq, Jan 2017]
Protein Families:	Druggable Genome, Protein Kinase

Product images:

Coomassie blue staining of purified PRKD1 protein (Cat# [TP311676]). The protein was produced from HEK293T cells transfected with PRKD1 cDNA clone (Cat# [RC211676]) using MegaTran 2.0 (Cat# [TT210002]).