

Product datasheet for TP311671M

CYP4B1 (NM_001099772) Human Recombinant Protein

Product data:

Product Type:	Recombinant Proteins
Description:	Recombinant protein of human cytochrome P450, family 4, subfamily B, polypeptide 1 (CYP4B1), transcript variant 1, 100 µg
Species:	Human
Expression Host:	HEK293T
Expression cDNA Clone or AA Sequence:	>RC211671 protein sequence Red=Cloning site Green=Tags(s)

MVPSFSLSLFSSSLGLWASGLILVLGFLKLIHLLLRQTLAKAMDKFPGPPTHWLFHGHALEIQETGSLDKV
VSWAHQFPYAHPLWFGQFIGFLNIYEPDYAKAVYSRGPDKAPDVYDFFLQWIGRLLVLEGPKWLQHRKL
LTPGFHYDVLKPYVAVFTESTRIMLDKWEKAREGKSFDFCDVGHMALNTLMKCTFGRGDTGLGHSRDS
SYLLAVSDLTLLMQQLVVSFYHNDFIYWLTPHGRRFLRACQVAHDHTDQVIRERKAALQDEKVRKKIQN
RRHLDFLDILLGARDEDDIKLSDADLRAEVDTFMFEGHDTTTSGISWFLYCMALYPEHQHRCREEVREIL
GDQDFQWDDLKGMTYLTMCIKESFRLYPPVPQVYRQLSKPVTVDGRSLPAGSLISMHIYALHRNSAVW
PDPEVFDLSLRFSTENASKRHPFAFMPFSAGPRNCIGQQFAMSEMKVVTAMCLLRFEFSLDPSRLPIKMPQ
LVLRKNGFHLHLKPLGPGSGK

TRTRPLEQKLISEEDLAANDILDYKDDDDKV

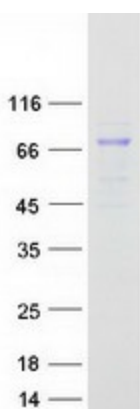
Tag:	C-Myc/DDK
Predicted MW:	58.9 kDa
Concentration:	>0.05 µg/µL as determined by microplate BCA method
Purity:	> 80% as determined by SDS-PAGE and Coomassie blue staining
Buffer:	25 mM Tris-HCl, 100 mM glycine, pH 7.3, 10% glycerol
Preparation:	Recombinant protein was captured through anti-DDK affinity column followed by conventional chromatography steps.
Note:	For testing in cell culture applications, please filter before use. Note that you may experience some loss of protein during the filtration process.
Storage:	Store at -80°C.



[View online »](#)

Stability:	Stable for 12 months from the date of receipt of the product under proper storage and handling conditions. Avoid repeated freeze-thaw cycles.
RefSeq:	NP_001093242
Locus ID:	1580
UniProt ID:	P13584
RefSeq Size:	2173
Cytogenetics:	1p33
RefSeq ORF:	1536
Synonyms:	CYP1VB1; P-450HP
Summary:	This gene encodes a member of the cytochrome P450 superfamily of enzymes. The cytochrome P450 proteins are monooxygenases which catalyze many reactions involved in drug metabolism and synthesis of cholesterol, steroids and other lipids. This protein localizes to the endoplasmic reticulum. In rodents, the homologous protein has been shown to metabolize certain carcinogens; however, the specific function of the human protein has not been determined. Multiple transcript variants have been found for this gene. [provided by RefSeq, Jan 2016]
Protein Families:	Druggable Genome, P450, Transmembrane

Product images:



Coomassie blue staining of purified CYP4B1 protein (Cat# [TP311671]). The protein was produced from HEK293T cells transfected with CYP4B1 cDNA clone (Cat# [RC211671]) using MegaTran 2.0 (Cat# [TT210002]).