

## Product datasheet for **TP311641L**

### PRICKLE4 (NM\_013397) Human Recombinant Protein

#### Product data:

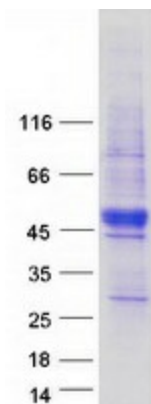
Product Type:	Recombinant Proteins
Description:	Recombinant protein of human prickle homolog 4 (Drosophila) (PRICKLE4), 1 mg
Species:	Human
Expression Host:	HEK293T
Expression cDNA Clone or AA Sequence:	>RC211641 representing NM_013397 <b>Red</b> =Cloning site <b>Green</b> =Tags(s)  MSVQNSGWPHQEDSPKPQDPGPPANSDDSDSGHLPGEDPEDTHAQGPAVLSLGSCLCLDTNQAPNWTGLQTL LQQLPPQDIDERYCLALGEEERAELQLFCARRKQALGQGVARLVLPKLEGHTCEKCRELLKPGYGVFA ARAGEQRCWHQPCFACQACGQALINLIYFYHDGQLYCGRHHAELLRPRCPACDQLIFSWRCTEAGQRWH ENHFCCQDCAGPLGGGRYALPGGSPCCPSCFENRYS DAGSSWAGALEGQAFLETGLDRTEGRDQTSVNS ATLSRTLLAAAGSSSLQTRGLPGSSPQENRPGDKAEAPKGQEQRLETIRDPKDTPFSTCSSSSDSEP EGFFLGERLPQSWKTPGSLQAEDSNASKTHCTMC  <b>TRTRPLEQKLISEEDLAANDILDYKDDDDKV</b>
Tag:	C-Myc/DDK
Predicted MW:	41.6 kDa
Concentration:	>0.05 µg/µL as determined by microplate BCA method
Purity:	> 80% as determined by SDS-PAGE and Coomassie blue staining
Buffer:	25 mM Tris-HCl, 100 mM glycine, pH 7.3, 10% glycerol
Preparation:	Recombinant protein was captured through anti-DDK affinity column followed by conventional chromatography steps.
Note:	For testing in cell culture applications, please filter before use. Note that you may experience some loss of protein during the filtration process.
Storage:	Store at -80°C.
Stability:	Stable for 12 months from the date of receipt of the product under proper storage and handling conditions. Avoid repeated freeze-thaw cycles.
RefSeq:	<a href="#">NP_037529</a>
Locus ID:	29964



[View online »](#)

UniProt ID:	<a href="#">Q2TBC4</a>
RefSeq Size:	2542
Cytogenetics:	6p21.1
RefSeq ORF:	1152
Synonyms:	C6orf49; OBTP; OEBT; TOMM6
Summary:	C6ORF49 is a member of the LIM domain protein family (Teufel et al., 2005 [PubMed 15702247]). [supplied by OMIM, Mar 2008]

### Product images:



Coomassie blue staining of purified PRICKLE4 protein (Cat# [TP311641]). The protein was produced from HEK293T cells transfected with PRICKLE4 cDNA clone (Cat# [RC211641]) using MegaTran 2.0 (Cat# [TT210002]).