

Product datasheet for **TP311605M**

Prominin 2 (PROM2) (NM_144707) Human Recombinant Protein

Product data:

Product Type:	Recombinant Proteins
Description:	Recombinant protein of human prominin 2 (PROM2), 100 µg
Species:	Human
Expression Host:	HEK293T
Expression cDNA Clone or AA Sequence:	>RC211605 representing NM_144707 Red=Cloning site Green=Tags(s)

MKHTLALLAPLLGLGLGLALSQLAAGATDCKFLGPAEHLTFTPAARARWLAPRVRAPGLLDSLYGTVRRF
LSVQLNPFPELVKALLNELASVKVNEVRYEAGYVCAVIAGLYLLLVP TAGLCFCCCRCHRRCGGRV
KTEHKALACERAALMVFLLLTLLLLIGVVCAFVTNQRTHEQMGPSEAMPETLLSLWGLVSDVPQELQA
VAQQFSLPQEQVSEELDGVGVSIGSAIHTQLRSSVYPLLAAVGSLGQVLQVSVHHLQTLNATVVELQAGQ
QDLEPAIREHRDRLELLQEARCQGDCAGALSWARTLELGADFSQVPSVDHVLHQLKGVPEANFSSMVQE
ENSTFNALPALAAMQTSSVVQELKKAVAQQPEGVRTLAEGFPGLEAASRWAQALQEVEESSRYPYLQEVQR
YETRWIVGCVLCSVFLFVLCNLLGLNLGIWGLSARDDP SHPEAKGEAGARFLMAGVGLSFLFAAPLIL
LVFATFLVGGNVQTLVCRSWENGELFEFADTPGNLPPSMNLSQLLGLRKNISIHQAYQQCKEGAALWTVL
QLNDSYDLEEHLNINQYTNKLRQELQSLKVDTSQSLDLLSSAARRDLEALQSSGLQRIHYPDFLVQIQRPV
VKTSMEQLAQELQGLAQADNSVLGQRLQEEAQGLRNHLHQEKVVPQQSLVAKLNLSVRALESSAPNLQLE
TSDVLANVTYK GELPAWAARILRNVSECFLAREMGYFSQYVAVVREEVTQRIATCQPLSGALDNSRVIL
CDMMADPWNAFWFCLAWCTFFLIPSIIFAVKTSKYFRPIRKRLSSTSSEETQLFHIPRVTSKLL

TRTRPLEQKLISEEDLAANDILDYKDDDDKV

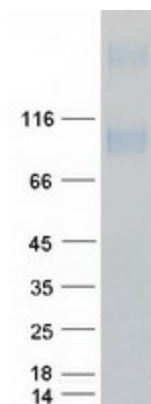
Tag:	C-Myc/DDK
Predicted MW:	91.7 kDa
Concentration:	>0.05 µg/µL as determined by microplate BCA method
Purity:	> 80% as determined by SDS-PAGE and Coomassie blue staining
Buffer:	25 mM Tris-HCl, 100 mM glycine, pH 7.3, 10% glycerol
Preparation:	Recombinant protein was captured through anti-DDK affinity column followed by conventional chromatography steps.
Note:	For testing in cell culture applications, please filter before use. Note that you may experience some loss of protein during the filtration process.



[View online »](#)

Storage:	Store at -80°C.
Stability:	Stable for 12 months from the date of receipt of the product under proper storage and handling conditions. Avoid repeated freeze-thaw cycles.
RefSeq:	NP_653308
Locus ID:	150696
UniProt ID:	Q8N271 , B2R879
RefSeq Size:	3822
Cytogenetics:	2q11.1
RefSeq ORF:	2502
Synonyms:	PROML2
Summary:	This gene encodes a member of the prominin family of pentaspan membrane glycoproteins. The encoded protein localizes to basal epithelial cells and may be involved in the organization of plasma membrane microdomains. Alternative splicing results in multiple transcript variants. [provided by RefSeq, Oct 2009]
Protein Families:	Transmembrane

Product images:



Coomassie blue staining of purified PROM2 protein (Cat# [TP311605]). The protein was produced from HEK293T cells transfected with PROM2 cDNA clone (Cat# [RC211605]) using MegaTran 2.0 (Cat# [TT210002]).