

Product datasheet for TP311601M

L1CAM (NM_000425) Human Recombinant Protein

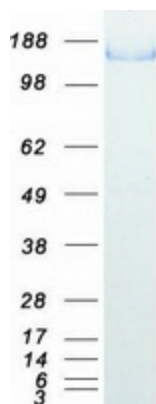
Product data:

Product Type:	Recombinant Proteins
Description:	Recombinant protein of human L1 cell adhesion molecule (L1CAM), transcript variant 1, 100 µg
Species:	Human
Expression Host:	HEK293T
Expression cDNA Clone or AA Sequence:	>RC211601 representing NM_000425 Red =Cloning site Green =Tags(s)
	<p>MVVALRYVWPLLLCSPCLLIQIPEEYEGHHVMEPPVITEQSPRRLVWFPTDDISLKCEASGKPEVQFRWT RDGVHFKPKEELGVTVYQSPHSGSFTITGNNSNFAQRFGIYRCFASNKLTAMSHAIRLMAEGAPKWPK ETVKPVEVEEGESVVLPCNPPPSAEPLRIYWMNSKILHIKQDERVTMGQNGNLYFANVLTSDNHSDYICH AHFPGTRTIIQKEPIDLRVKATNSMIDRKPRLLFPTNSSSHLVALQGQPLVLEICIAEGFPTPTIKWL RPS GMPADRVTYQNHNKTLQLLKVGEEDDGEYRCLAENSLGSARHAYVTVVEAAPYWLHKPQSHLYGPGETA RLDCQVQGRPQPEVTWRINGIPVEELAKDQKYRIQRGALILSNVQPSDTMVTQCEARNRHGLLLANAYIY VVQLPAKILTADNQTYMAVQGSTAYLLCKAFGAPVPSVQWLDEDEDGTTVLQDERFFPYANGTLGIRD LQAN DTGRYFCLAANDQNNVTIMANLKVKDQITQGPRSTIEKKGSRVTFTCQASFDPSLQPSITWRGDGRDL QELGSDSKYFIEDGRLVIHSLDYSQGNYSVASTELDVVESRAQLLVGSPGPVRLVLSDLHLLTQSQ VRVSWSPAEDHNAPIEKYDIEFEDKEMAPEKWYSLGKVPGNQSTTLKLSPVVHYTFRVTAINKYGPGE P SPVSETVVTPEAAPEKNPVDVKGEGNETTNMVTWKPLRWMDWNAPQVQYRVQWRPQGTRGPWQE QIVSD PFLVVSNTSTFVPEIKVQAVNSQKGKPEPQVTIGYSGEDYPQAIPELEGIEILNSSAVLVKWRPVDLAQ VKGHLRGYNVTYWREGSQRKHSKRHIHKDHVVVPANTTSVILSGLRPYSSYHLEVQAFNGRGGSPASEFT FSTPEGVPGHPEALHLECQSNTSLLLRLWQPPLSHNGVLTGYVLSYHPLDEGGKQLSFNLRDPELRTHNL TDLSPHLRYRFQLQATTKGPGEAIVREGGTMALSGISDFGNISATAGENYSVSWVPKEGQC NFRFHIL FKALGEEKGGASLSPQYVSYNQSSYTQWDLQPD TDYEIHLFKERMFRHQMAVKTNGTGRVRLPPAGFATE GWFIFVSAIILLLLVLILCFIKRSKGGKYSVKDKEDTQVDSEARPMKDETFGEYRSLESDNEEKAFGS SQPSLNGDIKPLGSDDSLADYGGSDVDVQFNE DGSFIGQYSGKKEKEAAGGNDSSGATSPINPAVALE</p> <p>TRTRPLEQKLISEEDLAANDILDYKDDDDKV</p>
Tag:	C-Myc/DDK
Predicted MW:	137.8 kDa
Concentration:	>0.05 µg/µL as determined by microplate BCA method
Purity:	> 80% as determined by SDS-PAGE and Coomassie blue staining



[View online »](#)

Buffer:	25 mM Tris-HCl, 100 mM glycine, pH 7.3, 10% glycerol
Preparation:	Recombinant protein was captured through anti-DDK affinity column followed by conventional chromatography steps.
Note:	For testing in cell culture applications, please filter before use. Note that you may experience some loss of protein during the filtration process.
Storage:	Store at -80°C.
Stability:	Stable for 12 months from the date of receipt of the product under proper storage and handling conditions. Avoid repeated freeze-thaw cycles.
RefSeq:	NP_000416
Locus ID:	3897
UniProt ID:	P32004
RefSeq Size:	4525
Cytogenetics:	Xq28
RefSeq ORF:	3771
Synonyms:	CAML1; CD171; HSAS; HSAS1; MASA; MIC5; N-CAM-L1; N-CAML1; NCAM-L1; S10; SPG1
Summary:	The protein encoded by this gene is an axonal glycoprotein belonging to the immunoglobulin supergene family. The ectodomain, consisting of several immunoglobulin-like domains and fibronectin-like repeats (type III), is linked via a single transmembrane sequence to a conserved cytoplasmic domain. This cell adhesion molecule plays an important role in nervous system development, including neuronal migration and differentiation. Mutations in the gene cause X-linked neurological syndromes known as CRASH (corpus callosum hypoplasia, retardation, aphasia, spastic paraplegia and hydrocephalus). Alternative splicing of this gene results in multiple transcript variants, some of which include an alternate exon that is considered to be specific to neurons. [provided by RefSeq, May 2013]
Protein Families:	Druggable Genome, ES Cell Differentiation/IPS, Transmembrane
Protein Pathways:	Axon guidance, Cell adhesion molecules (CAMs)

Product images:

Coomassie blue staining of purified L1CAM protein (Cat# [TP311601]). The protein was produced from HEK293T cells transfected with L1CAM cDNA clone (Cat# [RC211601]) using MegaTran 2.0 (Cat# [TT210002]).