

## Product datasheet for **TP311598M**

### CLEC10A (NM\_006344) Human Recombinant Protein

#### Product data:

**Product Type:** Recombinant Proteins

**Description:** Recombinant protein of human C-type lectin domain family 10, member A (CLEC10A), transcript variant 2, 100 µg

**Species:** Human

**Expression Host:** HEK293T

**Expression cDNA Clone or AA Sequence:** >RC211598 representing NM\_006344

**Red**=Cloning site **Green**=Tags(s)

MTRTYENFQYLENKVKVQGFKNGPLPLQSLQRLCSGPCHLLLSLGLGLLLLVIICVGFQNSKFQRDV  
TLRTDFSNFTSNTVAEIQALTSQGSLEETIASLKAIEVEGFKQERQAVHSEMMLLRVQQLVQDLKLTQV  
ATLNNNGEEASTEGTCCPVNWVEHQDSCYWFHSGMSWAEAEKYCQLKNAHLVWINSREEQNFVQKYLGS  
AYTWMGLSDPEGAWKWDGTDYATGFQNWKPGQPDDWQGHGLGGGEDCAHFHPDGRWNDDVCQRPYHWVC  
EAGLGQTSQESH

**TRTRPLEQKLISEEDLAANDILDYKDDDDKV**

**Tag:** C-Myc/DDK

**Predicted MW:** 32.7 kDa

**Concentration:** >0.05 µg/µL as determined by microplate BCA method

**Purity:** > 80% as determined by SDS-PAGE and Coomassie blue staining

**Buffer:** 25 mM Tris-HCl, 100 mM glycine, pH 7.3, 10% glycerol

**Preparation:** Recombinant protein was captured through anti-DDK affinity column followed by conventional chromatography steps.

**Note:** For testing in cell culture applications, please filter before use. Note that you may experience some loss of protein during the filtration process.

**Storage:** Store at -80°C.

**Stability:** Stable for 12 months from the date of receipt of the product under proper storage and handling conditions. Avoid repeated freeze-thaw cycles.

**RefSeq:** [NP\\_006335](#)



[View online »](#)

Locus ID: 10462

UniProt ID: [Q8IUN9](#)

RefSeq Size: 1716

Cytogenetics: 17p13.1

RefSeq ORF: 876

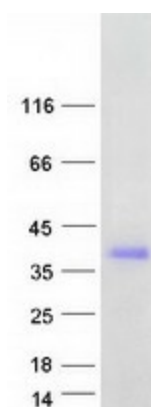
Synonyms: CD301; CLECSF13; CLECSF14; HML; HML2; MGL

**Summary:** This gene encodes a member of the C-type lectin/C-type lectin-like domain (CTL/CTLD) superfamily. Members of this family share a common protein fold and have diverse functions, such as cell adhesion, cell-cell signalling, glycoprotein turnover, and roles in inflammation and immune response. The encoded type 2 transmembrane protein may function as a cell surface antigen. Two transcript variants encoding distinct isoforms have been identified for this gene. [provided by RefSeq, Jul 2008]

**Protein** Transmembrane

**Families:**

### Product images:



Coomassie blue staining of purified CLEC10A protein (Cat# [TP311598]). The protein was produced from HEK293T cells transfected with CLEC10A cDNA clone (Cat# [RC211598]) using MegaTran 2.0 (Cat# [TT210002]).