

Product datasheet for **TP311598L**

CLEC10A (NM_006344) Human Recombinant Protein

Product data:

Product Type: Recombinant Proteins

Description: Recombinant protein of human C-type lectin domain family 10, member A (CLEC10A), transcript variant 2, 1 mg

Species: Human

Expression Host: HEK293T

Expression cDNA Clone or AA Sequence: >RC211598 representing NM_006344

AA Sequence: **Red**=Cloning site **Green**=Tags(s)

MTRTYENFQYLENKVKVQGFKNGPLPLQSLQLRLCSGPCHLLLSLGLLLLLVIICVGFQNSKFQRDV
TLRTDFSNFTSNTVAEIQALTSQGSLEETIASLKAIEVEGFKQERQAVHSEMMLLRVQQLVQDLKLTQV
ATLNNNGEEASTEGTCCPVNWVEHQDSCYWFHSGMSWAEAEKYCQLKNAHLVWINSREEQNFVQKYLGS
AYTWMGLSDPEGAWKWDGTDYATGFQNWKPGQPDDWQGHGLGGGEDCAHFHPDGRWDDVCQRPYHWVC
EAGLGQTSQESH

TRTRPLEQKLISEEDLAANDILDYKDDDDKV

Tag: C-Myc/DDK

Predicted MW: 32.7 kDa

Concentration: >0.05 µg/µL as determined by microplate BCA method

Purity: > 80% as determined by SDS-PAGE and Coomassie blue staining

Buffer: 25 mM Tris-HCl, 100 mM glycine, pH 7.3, 10% glycerol

Preparation: Recombinant protein was captured through anti-DDK affinity column followed by conventional chromatography steps.

Note: For testing in cell culture applications, please filter before use. Note that you may experience some loss of protein during the filtration process.

Storage: Store at -80°C.

Stability: Stable for 12 months from the date of receipt of the product under proper storage and handling conditions. Avoid repeated freeze-thaw cycles.

RefSeq: [NP_006335](#)



[View online »](#)

Locus ID: 10462

UniProt ID: [Q8IUN9](#)

RefSeq Size: 1716

Cytogenetics: 17p13.1

RefSeq ORF: 876

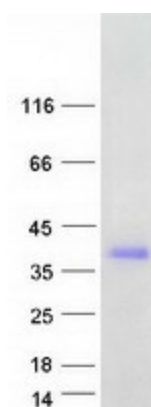
Synonyms: CD301; CLECSF13; CLECSF14; HML; HML2; MGL

Summary: This gene encodes a member of the C-type lectin/C-type lectin-like domain (CTL/CTLD) superfamily. Members of this family share a common protein fold and have diverse functions, such as cell adhesion, cell-cell signalling, glycoprotein turnover, and roles in inflammation and immune response. The encoded type 2 transmembrane protein may function as a cell surface antigen. Two transcript variants encoding distinct isoforms have been identified for this gene. [provided by RefSeq, Jul 2008]

Protein Transmembrane

Families:

Product images:



Coomassie blue staining of purified CLEC10A protein (Cat# [TP311598]). The protein was produced from HEK293T cells transfected with CLEC10A cDNA clone (Cat# [RC211598]) using MegaTran 2.0 (Cat# [TT210002]).