

## Product datasheet for **TP311519M**

### **NIT1 (NM\_005600) Human Recombinant Protein**

#### Product data:

Product Type:	Recombinant Proteins
Description:	Recombinant protein of human nitrilase 1 (NIT1), 100 µg
Species:	Human
Expression Host:	HEK293T
Expression cDNA Clone or AA Sequence:	>RC211519 representing NM_005600 <b>Red</b> =Cloning site <b>Green</b> =Tags(s)

MLGFITRPPHRFLSLLCPGLRIPQLSVLCAQPRPRAMAISSSSCELPLVAVCQVTSTPDKQQNFKTCAEL  
VREARLGACLAFLPEAFDFIARDPAETLHLSEPLGGKLEEYTLARECGLWLSLGGFHERGQDWEQTQ  
KIYNCHVLLNSKGAVVATYRKTHLCDVEIPGQGPMCESNSTMPGPSLESPVSTPAGKIGLAVCYDMRFPE  
LSLALAQAGAEILTYPSAFGSITGPAHWEVLLRARAIETQCYVAAAQCGRHHEKRASYGHSMVVDPWGT  
VVARCSEGPGLCLARIDLNYLRQLRRHLPVFQHRRPDLYGNLGHPLS

**TRTRPLEQKLISEEDLAANDILDYKDDDDKV**

Tag:	C-Myc/DDK
Predicted MW:	35.7 kDa
Concentration:	>0.05 µg/µL as determined by microplate BCA method
Purity:	> 80% as determined by SDS-PAGE and Coomassie blue staining
Buffer:	25 mM Tris-HCl, 100 mM glycine, pH 7.3, 10% glycerol
Preparation:	Recombinant protein was captured through anti-DDK affinity column followed by conventional chromatography steps.
Note:	For testing in cell culture applications, please filter before use. Note that you may experience some loss of protein during the filtration process.
Storage:	Store at -80°C.
Stability:	Stable for 12 months from the date of receipt of the product under proper storage and handling conditions. Avoid repeated freeze-thaw cycles.
RefSeq:	<u><a href="#">NP_005591</a></u>
Locus ID:	4817

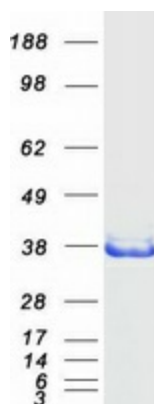


[View online »](#)

UniProt ID: [Q86X76](#)  
RefSeq Size: 1385  
Cytogenetics: 1q23.3  
RefSeq ORF: 981

**Summary:** This gene encodes a member of the nitrilase protein family with homology to bacterial and plant nitrilases, enzymes that cleave nitriles and organic amides to the corresponding carboxylic acids plus ammonia. Multiple transcript variants encoding different isoforms have been found for this gene. [provided by RefSeq, Jun 2010]

### Product images:



Coomassie blue staining of purified NIT1 protein (Cat# [TP311519]). The protein was produced from HEK293T cells transfected with NIT1 cDNA clone (Cat# [RC211519]) using MegaTran 2.0 (Cat# [TT210002]).