

Product datasheet for TP311478M

Cellular Apoptosis Susceptibility (CSE1L) (NM_001316) Human Recombinant Protein

Product data:

Product Type:	Recombinant Proteins
Description:	Purified recombinant protein of Homo sapiens CSE1 chromosome segregation 1-like (yeast) (CSE1L), 100 µg
Species:	Human
Expression Host:	HEK293T
Expression cDNA Clone or AA Sequence:	>RC211478 protein sequence Red=Cloning site Green=Tags(s)

MELSDANLQTLTEYLKKTLDPDPAIRRPAAEKFLESVEGNQNYPLLLLTLEKSQDNVIKVCASVTFKNYI
KRNWRIVEDEPNKICEADRVAIKANIVHMLMLSSPEQIQKQLSDAISIIGREDFPQKWPDLLEMVNRFQS
GDFHVGVLRTAHSFLFKRYRHEFKSNELWTEIKLVLDALPLTNLFKATIELCSTHANDASALRILFS
SLILISKLFYSLNFQDLPEFFEDNMETWMNMFHTLLTLDNKLLQTDDEEEAGLLELLKSQICDAAALYAQ
KYDEEFQRYLPRFVTAIWNLVTTGQEVKYDLLVSNAIQFLASVCERPHYKNLFEDQNTLTSICEKVIVP
NMEFRAADEEAFEDNSEEYIRRDLEGSDDITRRRAACDLVRGLCKFFEGPVTGIFSGYVNSMLQEYAKNP
SVNWKHKDAAIYLVTSLASKAQTQKHGITQANELVNLTEFFVNHLPLDKSANVNEFPVLKADGIKYIMI
FRNQVPKEHLLVSIPLLINHLQAESIVVHTYAAHALERLFTMRGPNNATLFTAEEIAPFVEILLTNLFKA
LTLPGSSENEYIMKAIMRSFSLQEAIIPIYIPLITQTLQKLLAVSKNPSKPHFNHYMFEAICLSIRITC
KANPAAVNFEEALFLVFTEILQNDVQEFIPYVFQVMSLLLETHKNDIPSSYMAFPHLLQPVLWERTGN
IPALVRLQAFLEGRSNTIASAAADKIPGLLGVFQKLIASKANDHQGFYLLNSIIEHMPPESVDQYRQKI
FILLFQRLQNSKTTKFIKSFVFINLYCIKYGALALQEIFDGIQPKMFGMVLEKIIPEIQKVSNGVEKK
ICAVGITKLLTECPPMMDTEYTKLWTPLLQSLIGL FELPEDDTIPDEEHFIDIEDTPGYQTAFSQLAFAG
KKEHDPVGMVNNPKIHLAQSLHKLSTACPRVPSMVSTSLNAEALQYLQGYLQAASVTL

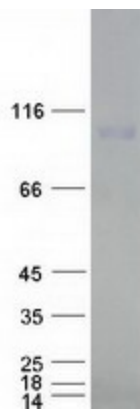
TRTRPLEQKLISEEDLAANDILDYKDDDDKV

Tag:	C-Myc/DDK
Predicted MW:	110.2 kDa
Concentration:	>0.05 µg/µL as determined by microplate BCA method
Purity:	> 80% as determined by SDS-PAGE and Coomassie blue staining
Buffer:	25 mM Tris-HCl, 100 mM glycine, pH 7.3, 10% glycerol



[View online »](#)

Preparation:	Recombinant protein was captured through anti-DDK affinity column followed by conventional chromatography steps.
Note:	For testing in cell culture applications, please filter before use. Note that you may experience some loss of protein during the filtration process.
Storage:	Store at -80°C.
Stability:	Stable for 12 months from the date of receipt of the product under proper storage and handling conditions. Avoid repeated freeze-thaw cycles.
RefSeq:	NP_001307
Locus ID:	1434
UniProt ID:	P55060 , A0A384NKW7
RefSeq Size:	3627
Cytogenetics:	20q13.13
RefSeq ORF:	2913
Synonyms:	CAS; CSE1; XPO2
Summary:	Proteins that carry a nuclear localization signal (NLS) are transported into the nucleus by the importin-alpha/beta heterodimer. Importin-alpha binds the NLS, while importin-beta mediates translocation through the nuclear pore complex. After translocation, RanGTP binds importin-beta and displaces importin-alpha. Importin-alpha must then be returned to the cytoplasm, leaving the NLS protein behind. The protein encoded by this gene binds strongly to NLS-free importin-alpha, and this binding is released in the cytoplasm by the combined action of RANBP1 and RANGAP1. In addition, the encoded protein may play a role both in apoptosis and in cell proliferation. Alternatively spliced transcript variants have been found for this gene. [provided by RefSeq, Jan 2012]
Protein Families:	Druggable Genome

Product images:

Coomassie blue staining of purified CSE1L protein (Cat# [TP311478]). The protein was produced from HEK293T cells transfected with CSE1L cDNA clone (Cat# [RC211478]) using MegaTran 2.0 (Cat# [TT210002]).