

## Product datasheet for TP311478L

### Cellular Apoptosis Susceptibility (CSE1L) (NM\_001316) Human Recombinant Protein

#### Product data:

Product Type:	Recombinant Proteins
Description:	Purified recombinant protein of Homo sapiens CSE1 chromosome segregation 1-like (yeast) (CSE1L), 1 mg
Species:	Human
Expression Host:	HEK293T
Expression cDNA Clone or AA Sequence:	>RC211478 protein sequence Red=Cloning site Green=Tags(s)

MELSDANLQTLTEYLKKTLDPDPAIRRPAAEKFLESVEGNQNYPLLLLTLEKSQDNVIKVCASVTFKNYI  
KRNWRIVEDEPNKICEADRVAIKANIVHMLLSSPEQIQQLSDAISIIGREDFPQKWPDLLEMVNRFQS  
GDFHVGVLRTAHSFLFKRYRHEFKSNELWTEIKLVLDALPLTNLFKATIELCSTHANDASALRILFS  
SLILISKLFYSLNFQDLPEFFEDNMETWMNMFHTLLTLDNKLLQTDDEEEAGLLELLKSQICDNAALYAQ  
KYDEEFQRYLPRFVTAIWNLVTTGQEVKYDLLVSNAIQFLASVCERPHYKNLFEDQNTLTSICEKVIVP  
NMEFRAADEEAFEDNSEEYIRRDLEGSIDITRRRAACDLVRGLCKFFEGPVTGIFSGYVNSMLQEYAKNP  
SVNWKHKDAIYLVTSLASKAQTQKHGITQANELVNLTEFFVNHILPDLKSANVNEFPVLKADGIKYIMI  
FRNQVPKEHLLVSIPLLINHLQAESIVVHTYAAHALERLFTMRGPNNATLFTAEEIAPFVEILLTNLFKA  
LTLPGSSENEYIMKAIMRSFSLQEAIIPIYIPLITLITQTLQKLLAVSKNPSKPHFNHYMFEAICLSIRITC  
KANPAAVNFEEALFLVFTEILQNDVQEFIPYVFQVMSLLETHKNDIPSSYMAFPHELLQPVLWERTGN  
IPALVRLQAFLEGRSNTIASAAADKIPGLLGVFQKLIASKANDHQGFYLLNSIIEHMPPESVDQYRQKI  
FILLFQRLQNSKTTKFIKSFVFINLYCIKYGALALQEIFDGIQPKMFGMVLEKIIPEIQKVSNGVEKK  
ICAVGITKLLTECPPMMDTEYTKLWTPLLQSLIGL FELPEDDTIPDEEHFIDIEDTPGYQTAFSQLAFAG  
KKEHDPVGMVNNPKIHLAQSLHKLSTACPRVPSMVSTSLNAEALQYLQGYLQAASVTL

TRTRPLEQKLISEEDLAANDILDYKDDDDKV

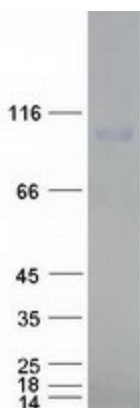
Tag:	C-Myc/DDK
Predicted MW:	110.2 kDa
Concentration:	>0.05 µg/µL as determined by microplate BCA method
Purity:	> 80% as determined by SDS-PAGE and Coomassie blue staining
Buffer:	25 mM Tris-HCl, 100 mM glycine, pH 7.3, 10% glycerol



[View online »](#)

<b>Preparation:</b>	Recombinant protein was captured through anti-DDK affinity column followed by conventional chromatography steps.
<b>Note:</b>	For testing in cell culture applications, please filter before use. Note that you may experience some loss of protein during the filtration process.
<b>Storage:</b>	Store at -80°C.
<b>Stability:</b>	Stable for 12 months from the date of receipt of the product under proper storage and handling conditions. Avoid repeated freeze-thaw cycles.
<b>RefSeq:</b>	<a href="#">NP_001307</a>
<b>Locus ID:</b>	1434
<b>UniProt ID:</b>	<a href="#">P55060</a> , <a href="#">A0A384NKW7</a>
<b>RefSeq Size:</b>	3627
<b>Cytogenetics:</b>	20q13.13
<b>RefSeq ORF:</b>	2913
<b>Synonyms:</b>	CAS; CSE1; XPO2
<b>Summary:</b>	Proteins that carry a nuclear localization signal (NLS) are transported into the nucleus by the importin-alpha/beta heterodimer. Importin-alpha binds the NLS, while importin-beta mediates translocation through the nuclear pore complex. After translocation, RanGTP binds importin-beta and displaces importin-alpha. Importin-alpha must then be returned to the cytoplasm, leaving the NLS protein behind. The protein encoded by this gene binds strongly to NLS-free importin-alpha, and this binding is released in the cytoplasm by the combined action of RANBP1 and RANGAP1. In addition, the encoded protein may play a role both in apoptosis and in cell proliferation. Alternatively spliced transcript variants have been found for this gene. [provided by RefSeq, Jan 2012]
<b>Protein Families:</b>	Druggable Genome

### Product images:



Coomassie blue staining of purified CSE1L protein (Cat# [TP311478]). The protein was produced from HEK293T cells transfected with CSE1L cDNA clone (Cat# [RC211478]) using MegaTran 2.0 (Cat# [TT210002]).