

Product datasheet for **TP311472M**

RAB12 (NM_001025300) Human Recombinant Protein

Product data:

Product Type:	Recombinant Proteins
Description:	Recombinant protein of human RAB12, member RAS oncogene family (RAB12), 100 µg
Species:	Human
Expression Host:	HEK293T
Expression cDNA Clone or AA Sequence:	>RC211472 representing NM_001025300 Red =Cloning site Green =Tags(s)
	<p>MDPGAALQRRAGGGGGLGAGSPALSGGQRRRRKQPPRPADFKLQVIIIIGSRGVGKTSLMERFTDDTFCEA CKSTVGVDFKIKTVELRGKKIRLQIWDTAGQERFNSITSAYYRSAGIILVYDITKKETFDDLPKWMKMI DKYASEDAELLVGNKLDCEITRQQGEKFAQQITGMRFCEASAKDNFNVDIEFLKLVDDILKKMPL DILRNELNSILSLQPEPEIPPELPPRPHVRCC</p> <p>TRTRPLEQKLISEEDLAANDILDYKDDDDKV</p>
Tag:	C-Myc/DDK
Predicted MW:	27.1 kDa
Concentration:	>0.05 µg/µL as determined by microplate BCA method
Purity:	> 80% as determined by SDS-PAGE and Coomassie blue staining
Buffer:	25 mM Tris-HCl, 100 mM glycine, pH 7.3, 10% glycerol
Preparation:	Recombinant protein was captured through anti-DDK affinity column followed by conventional chromatography steps.
Note:	For testing in cell culture applications, please filter before use. Note that you may experience some loss of protein during the filtration process.
Storage:	Store at -80°C.
Stability:	Stable for 12 months from the date of receipt of the product under proper storage and handling conditions. Avoid repeated freeze-thaw cycles.
RefSeq:	NP_001020471
Locus ID:	201475
UniProt ID:	Q6IQ22



[View online »](#)

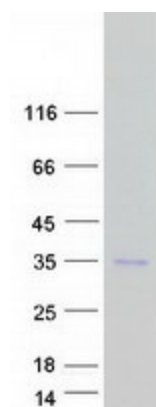
RefSeq Size: 2138

Cytogenetics: 18p11.22

RefSeq ORF: 732

Summary: The small GTPases Rab are key regulators of intracellular membrane trafficking, from the formation of transport vesicles to their fusion with membranes. Rabs cycle between an inactive GDP-bound form and an active GTP-bound form that is able to recruit to membranes different set of downstream effectors directly responsible for vesicle formation, movement, tethering and fusion. That Rab may play a role in protein transport from recycling endosomes to lysosomes regulating, for instance, the degradation of the transferrin receptor. Involved in autophagy (By similarity).[UniProtKB/Swiss-Prot Function]

Product images:



Coomassie blue staining of purified RAB12 protein (Cat# [TP311472]). The protein was produced from HEK293T cells transfected with RAB12 cDNA clone (Cat# [RC211472]) using MegaTran 2.0 (Cat# [TT210002]).