

Product datasheet for TP311417L

OPA1 (NM_130832) Human Recombinant Protein

Product data:

Product Type: Recombinant Proteins

Description: Recombinant protein of human optic atrophy 1 (autosomal dominant) (OPA1), nuclear gene encoding mitochondrial protein, transcript variant 3, 1 mg

Species: Human

Expression Host: HEK293T

Expression cDNA Clone or AA Sequence: >RC211417 representing NM_130832
Red=Cloning site **Green**=Tags(s)

MWRLRRAAVACEVCQSLVKHSSGIKGSPLQKLHLVSRSIYHSHHPTLKLQRPQLRTSFQQFSSLTNLPL
RKLKFSPIKYGYQPRRNFWPARLATRLLKRLYLILGSVGGGYTAKKTFDQWKDMIPDLSEYKWIVPDIV
WEIDEYIDFGHKLKLVSEVIGASDLLLLGSPPEATAFRATDRGSESDKHFRKVSDEKIDQLQEELLHTQLK
YQRILERLEKENKELRKLVLQKDDKGIHHRKLLKSLIDMYSEVLDVLSYDASYNTQDHLPRVVVVGDS
AGKTSVLEMIAQARIFPRGSGEMMTRSPVKVTLSEGPLHVALFKDSSREFDLTKEEDLAALRHEIELRMR
KNVKEGCTVSPETISLNVKGPGLQRMVLDLPGVINTVTSGMADTKETIFSISKAYMQNPNAIILCIQD
GSVDAERSIVTDLVSQMDPHGRRITIFVLTKVDLAEKNVASPSRIQQIIEGKLFPMKALGYFAVVTGKNS
SESIEAIREYEEFFQNSKLLKTSMLKAHQVTRNLSLAVSDCFWKMVRESVEQQADSFKATRFNLETEW
KNNYPRLRELDLRFKAKNEILDEVISLSQVTPKHWEELQQSLWERVSTHVIENIYLPAAQTMNSGT
FNNTVDIKLKQWTDKQLPNKAVEVAWETLQEEFSRFMTEPKGKEHDDIFDKLKEAVKEESIKRHKWDF
EDSLRVIQHNALEDRSISDKQQWDAAIYFMEEALQARLKDTEAENMVGPDWKKRWLYWKNRTQEQC
NETKNELEKMLKCNEEHPAYLASDEITVRKNLESRGVEVDPSLIKDTWHQVYRRHFLKTAALNHCNLCRR
GFYYYQRHFVDSELECNDVFLFWRIQRMLAITANTLRQQLTNTTEVRRLEKNVKEVLEDAEDGEGKIKLL
TGKRVQLAEDLKKVREIQEKLDAFIEALHQEK

SGPTRRRLEQKLISEEDLAANDILDYKDDDDKV

Tag: C-Myc/DDK

Predicted MW: 109.2 kDa

Concentration: >0.1 µg/µL as determined by microplate BCA method

Purity: > 80% as determined by SDS-PAGE and Coomassie blue staining

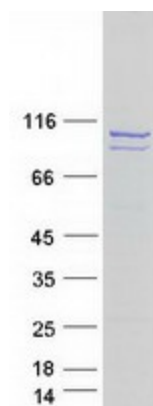
Buffer: 25 mM Tris-HCl, 100 mM glycine, pH 7.3, 10% glycerol



[View online »](#)

Preparation:	Recombinant protein was captured through anti-DDK affinity column followed by conventional chromatography steps.
Note:	For testing in cell culture applications, please filter before use. Note that you may experience some loss of protein during the filtration process.
Storage:	Store at -80°C.
Stability:	Stable for 12 months from the date of receipt of the product under proper storage and handling conditions. Avoid repeated freeze-thaw cycles.
RefSeq:	NP_570845
Locus ID:	4976
UniProt ID:	E5KCLK0
RefSeq Size:	6291
Cytogenetics:	3q29
RefSeq ORF:	2826
Synonyms:	BERHS; largeG; MGM1; MTDPS14; NPG; NTG
Summary:	The protein encoded by this gene is a nuclear-encoded mitochondrial protein with similarity to dynamin-related GTPases. The encoded protein localizes to the inner mitochondrial membrane and helps regulate mitochondrial stability and energy output. This protein also sequesters cytochrome c. Mutations in this gene have been associated with optic atrophy type 1, which is a dominantly inherited optic neuropathy resulting in progressive loss of visual acuity, leading in many cases to legal blindness. [provided by RefSeq, Aug 2017]

Product images:



Coomassie blue staining of purified OPA1 protein (Cat# [TP311417]). The protein was produced from HEK293T cells transfected with OPA1 cDNA clone (Cat# [RC211417]) using MegaTran 2.0 (Cat# [TT210002]).