

Product datasheet for TP311378

TBC1D13 (NM_018201) Human Recombinant Protein

Product data:

Product Type:	Recombinant Proteins
Description:	Recombinant protein of human TBC1 domain family, member 13 (TBC1D13), 20 µg
Species:	Human
Expression Host:	HEK293T
Expression cDNA Clone or AA Sequence:	>RC211378 protein sequence Red=Cloning site Green=Tags(s)

MSSLHKSRIADFQDVLKEPSIALEKLRLELSFGIPCEGGLRCLCWKILLNYLPLERASWTSILAKQRELY
AQFLREMIIQPGIAKANMGVSREDVTFEDHPLNPNPDSRWNTYFKDNEVLLQIDKDVRRLLCPDISFFQRA
TDYPCLLILDPQNEFETLRKRVEQTTLKSQTVARNRSGVTNMSSPHKNSVPSSLNEYEVLPNGCEAHWEV
VERILFIYAKLNPGIAYVQGMNEIVGPLYTFATDPNSEWKEHAEADTFFCFTNLMAEIRDNFIKSLDSS
QCGITYKMEKVYSTLKDQDVELYKLEQNIKPQFFAFRWLTLSSQEFLLPDVIRIWDLSLFAADDNRDFD
LLLVCAMLMILIREQLLEGDFTVNMRLLDYDYPITDVCQILQKAKELQDSK

TRTRPLEQKLISEEDLAANDILDYKDDDDKV

Tag:	C-Myc/DDK
Predicted MW:	46.4 kDa
Concentration:	>0.05 µg/µL as determined by microplate BCA method
Purity:	> 80% as determined by SDS-PAGE and Coomassie blue staining
Buffer:	25 mM Tris-HCl, 100 mM glycine, pH 7.3, 10% glycerol
Preparation:	Recombinant protein was captured through anti-DDK affinity column followed by conventional chromatography steps.
Note:	For testing in cell culture applications, please filter before use. Note that you may experience some loss of protein during the filtration process.
Storage:	Store at -80°C.
Stability:	Stable for 12 months from the date of receipt of the product under proper storage and handling conditions. Avoid repeated freeze-thaw cycles.
RefSeq:	NP_060671
Locus ID:	54662



[View online »](#)

UniProt ID: [Q9NVG8](#), [A0A024R8C8](#), [B3KNG3](#)

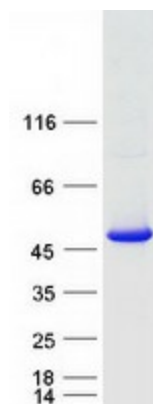
RefSeq Size: 3919

Cytogenetics: 9q34.11

RefSeq ORF: 1200

Summary: Acts as a GTPase-activating protein for RAB35. Together with RAB35 may be involved in regulation of insulin-induced glucose transporter SLC2A4/GLUT4 translocation to the plasma membrane in adipocytes.[UniProtKB/Swiss-Prot Function]

Product images:



Coomassie blue staining of purified TBC1D13 protein (Cat# TP311378). The protein was produced from HEK293T cells transfected with TBC1D13 cDNA clone (Cat# [RC211378]) using MegaTran 2.0 (Cat# [TT210002]).