

Product datasheet for **TP311357M**

MYBPHL (NM_001010985) Human Recombinant Protein

Product data:

Product Type: Recombinant Proteins

Description: Recombinant protein of human myosin binding protein H-like (MYBPHL), 100 µg

Species: Human

Expression Host: HEK293T

Expression cDNA Clone
or AA Sequence: >RC211357 protein sequence
Red=Cloning site **Green**=Tags(s)

MEAATAPEVAAGSKLKVKEASPADAEPQASPGQGAGSPTPQLLPPIEEHPKIWLPRALRQTYIRKVGDT
VNULLIPFQGKPKPQAIWTHDGCALDTRRVSVRNGEQDSILFIREAQRADSGRYQLRVQLGGLEATATIDI
LVIERPGPPQSIKLVVDVWGFSALEWTPPQDTGNTALLGYTVQKADTKSGLWFTVLEHYHRTSCIVSDLI
IGNSYAFRVFAENQCGLSETAPITDLAHIQKAATVYKTKGFAQRDFSEAPKFTQPLANCTTGTGYNTQL
FCCVRASPRPKIWLKMKMDIQGNPKYRALTHLGICSLKIRKPGPFDDGGIYTCKAVNPLGEASVDCRVDV
KVPN

TRTRPLEQKLISEEDLAANDILDYKDDDDKV

Tag: C-Myc/DDK

Predicted MW: 38.6 kDa

Concentration: >0.05 µg/µL as determined by microplate BCA method

Purity: > 80% as determined by SDS-PAGE and Coomassie blue staining

Buffer: 25 mM Tris-HCl, 100 mM glycine, pH 7.3, 10% glycerol

Preparation: Recombinant protein was captured through anti-DDK affinity column followed by conventional chromatography steps.

Note: For testing in cell culture applications, please filter before use. Note that you may experience some loss of protein during the filtration process.

Storage: Store at -80°C.

Stability: Stable for 12 months from the date of receipt of the product under proper storage and handling conditions. Avoid repeated freeze-thaw cycles.

RefSeq: [NP_001010985](#)

Locus ID: 343263



[View online »](#)

UniProt ID: [A2RUH7](#)

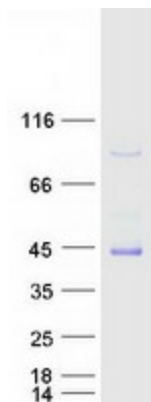
RefSeq Size: 1372

Cytogenetics: 1p13.3

RefSeq ORF: 1062

Summary: This gene encodes a protein with two immunoglobulin superfamily domains and a fibronectin 3 domain. Alternative splicing results in multiple transcript variants. [provided by RefSeq, May 2012]

Product images:



Coomassie blue staining of purified MYBPHL protein (Cat# [TP311357]). The protein was produced from HEK293T cells transfected with MYBPHL cDNA clone (Cat# [RC211357]) using MegaTran 2.0 (Cat# [TT210002]).