

Product datasheet for **TP311357L**

MYBPHL (NM_001010985) Human Recombinant Protein

Product data:

Product Type:	Recombinant Proteins
Description:	Recombinant protein of human myosin binding protein H-like (MYBPHL), 1 mg
Species:	Human
Expression Host:	HEK293T
Expression cDNA Clone or AA Sequence:	>RC211357 protein sequence Red=Cloning site Green=Tags(s)

MEAATAPEVAAGSKLKVKEASPADAEPQASPGQGAGSPTPQLLPPIEEHPKIWLPRALRQTYIRKVGDT
VNULLIPFQGKPKPQAIWTHDGCALDTRRVSVRNGEQDSILFIREAQRADSGRYQLRVQLGGLEATATIDI
LVIERPGPPQSIKLVVDVWGFSALEWTPPQDTGNTALLGYTVQKADTKSGLWFTVLEHYHRTSCIVSDLI
IGNSYAFRVFAENQCGLSETAPITDLAHIQKAATVYKTKGFAQRDFSEAPKFTQPLANCTTGTGYNTQL
FCCVRASPRPKIWLKMKMDIQGNPKYRALTHLGICSLKIRKPGPFDDGGIYTCKAVNPLGEASVDCRVDV
KVPN

TRTRPLEQKLISEEDLAANDILDYKDDDDKV

Tag:	C-Myc/DDK
Predicted MW:	38.6 kDa
Concentration:	>0.05 µg/µL as determined by microplate BCA method
Purity:	> 80% as determined by SDS-PAGE and Coomassie blue staining
Buffer:	25 mM Tris-HCl, 100 mM glycine, pH 7.3, 10% glycerol
Preparation:	Recombinant protein was captured through anti-DDK affinity column followed by conventional chromatography steps.
Note:	For testing in cell culture applications, please filter before use. Note that you may experience some loss of protein during the filtration process.
Storage:	Store at -80°C.
Stability:	Stable for 12 months from the date of receipt of the product under proper storage and handling conditions. Avoid repeated freeze-thaw cycles.
RefSeq:	NP_001010985
Locus ID:	343263



[View online »](#)

UniProt ID: [A2RUH7](#)

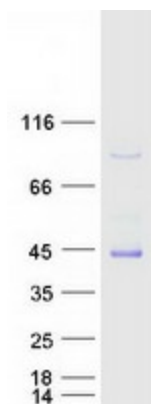
RefSeq Size: 1372

Cytogenetics: 1p13.3

RefSeq ORF: 1062

Summary: This gene encodes a protein with two immunoglobulin superfamily domains and a fibronectin 3 domain. Alternative splicing results in multiple transcript variants. [provided by RefSeq, May 2012]

Product images:



Coomassie blue staining of purified MYBPHL protein (Cat# [TP311357]). The protein was produced from HEK293T cells transfected with MYBPHL cDNA clone (Cat# [RC211357]) using MegaTran 2.0 (Cat# [TT210002]).