

Product datasheet for TP311349M

PRAMEF10 (NM_001039361) Human Recombinant Protein

Product data:

Product Type:	Recombinant Proteins
Description:	Recombinant protein of human PRAME family member 10 (PRAMEF10), 100 µg
Species:	Human
Expression Host:	HEK293T
Expression cDNA Clone or AA Sequence:	>RC211349 protein sequence Red=Cloning site Green=Tags(s)

MSLQAPSRLLLELAGQSLLRNQFLTIFTLDELPREVFPLMFMEAFSMRRFEALKLMVQAWPFLSLPLGSLM
KTLHLETQAVLRGLDTLVAQKVRPRRWKLVLDLRDLDENFWTIWSGARVLSCSPEAMSKRQTVEDCPR
MGEHQPLKVFIDLCLKESTLDECLSYLFGWIHYRRGLVHLCCSKVQNYSMPTSSFRNLLERIPDSIQEL
EWWKKCSLNKTGKFAPYLSQMSNLRELFLAFGYERELYVSVQWPCIPDLDSPFLCLYYPQMLYIKKISNI
KEHLEHLLRYLKNPLGAFIFSDAYLADRMECLSQYPSLSQLKELRLIHILMWTTHLEPLGVLLEKVAAT
LKTLLVKDCRIQDPQLRVLLPALSHCSQLTTFNFHGNETSMNALKDLLRHTRGLSKLGLLELYPAPLESLD
YKGHVNWELTPIRAELMRTLREVRQPKRIFFGPVPCPNCGSWPSEKVDFFHLC

TRTRPLEQKLISEEDLAANDILDYKDDDDKV

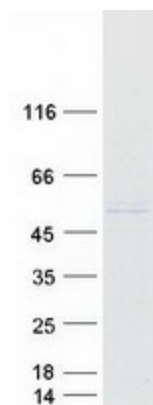
Tag:	C-Myc/DDK
Predicted MW:	54.9 kDa
Concentration:	>0.05 µg/µL as determined by microplate BCA method
Purity:	> 80% as determined by SDS-PAGE and Coomassie blue staining
Buffer:	25 mM Tris-HCl, 100 mM glycine, pH 7.3, 10% glycerol
Preparation:	Recombinant protein was captured through anti-DDK affinity column followed by conventional chromatography steps.
Note:	For testing in cell culture applications, please filter before use. Note that you may experience some loss of protein during the filtration process.
Storage:	Store at -80°C.
Stability:	Stable for 12 months from the date of receipt of the product under proper storage and handling conditions. Avoid repeated freeze-thaw cycles.
RefSeq:	<u>NP_001034450</u>



[View online »](#)

Locus ID: 343071
UniProt ID: [O60809](#)
RefSeq Size: 1525
Cytogenetics: 1p36.21
RefSeq ORF: 1422

Product images:



Coomassie blue staining of purified PRAMEF10 protein (Cat# [TP311349]). The protein was produced from HEK293T cells transfected with PRAMEF10 cDNA clone (Cat# [RC211349]) using MegaTran 2.0 (Cat# [TT210002]).