

## Product datasheet for **TP311331M**

### ZNF362 (NM\_152493) Human Recombinant Protein

#### Product data:

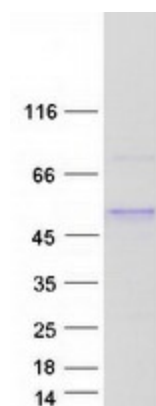
Product Type:	Recombinant Proteins
Description:	Recombinant protein of human zinc finger protein 362 (ZNF362), 100 µg
Species:	Human
Expression Host:	HEK293T
Expression cDNA Clone or AA Sequence:	>RC211331 protein sequence <b>Red</b> =Cloning site <b>Green</b> =Tags(s)
	MSRSSPSGKGHSRMAEPRFNNPYFWPPPTMPSQLDNLVLINKIKEQLMAEKIRPPHLPPTSASSQQPLL VPPAPAESSQAVMSLPKLQQVPGHPQAVPQPDVALHARPATSTVTGLGLSTRTPSVSTSESSAGAGTGT GTSTPSTPTTTSQSRLIASSPTLISGITSPPLLDSIKTIQGHGLLGPPKSERGRKKIKAENPGGPPVLV PYPILASGETAKEGKTYRCKVCPLTFFTKSEMQUIHKSHTEAKPHKCPHCKSFANASYLAQHLRIHLGV KPYHCSYCDKSFRLSHLQQHTRIHTGDRPYKCPHPGCEKAFTQLSNLQSHQRQHNDKPKPCNCYR AY SDSASLQIHLSAHAIKHAKAYCCSMCGRAYTSETYLMKHMSKHTVVEHLVSHHSPQRTESPGIPVRISLI  <b>TRTRPLEQKLISEEDLAANDILDYKDDDDKV</b>
Tag:	C-Myc/DDK
Predicted MW:	45.6 kDa
Concentration:	>0.05 µg/µL as determined by microplate BCA method
Purity:	> 80% as determined by SDS-PAGE and Coomassie blue staining
Buffer:	25 mM Tris-HCl, 100 mM glycine, pH 7.3, 10% glycerol
Preparation:	Recombinant protein was captured through anti-DDK affinity column followed by conventional chromatography steps.
Note:	For testing in cell culture applications, please filter before use. Note that you may experience some loss of protein during the filtration process.
Storage:	Store at -80°C.
Stability:	Stable for 12 months from the date of receipt of the product under proper storage and handling conditions. Avoid repeated freeze-thaw cycles.
RefSeq:	<u>NP_689706</u>



[View online »](#)

Locus ID:	149076
UniProt ID:	<a href="#">Q5T0B9</a>
RefSeq Size:	3158
Cytogenetics:	1p35.1
RefSeq ORF:	1260
Synonyms:	lin-29; RN
Summary:	May be involved in transcriptional regulation.[UniProtKB/Swiss-Prot Function]

### Product images:



Coomassie blue staining of purified ZNF362 protein (Cat# [TP311331]). The protein was produced from HEK293T cells transfected with ZNF362 cDNA clone (Cat# [RC211331]) using MegaTran 2.0 (Cat# [TT210002]).