

## Product datasheet for **TP311320**

### KCNE2 (NM\_172201) Human Recombinant Protein

#### Product data:

|                                       |  |
|---------------------------------------|--|
| Product Type:                         | Recombinant Proteins   |
| Description:                          | Recombinant protein of human potassium voltage-gated channel, Isk-related family, member 2 (KCNE2), 20 µg  |
| Species:                              | Human  |
| Expression Host:                      | HEK293T  |
| Expression cDNA Clone or AA Sequence: | >RC211320 protein sequence<br><b>Red</b> =Cloning site <b>Green</b> =Tags(s)   |
|                                       | MSTLSNFTQTLEDVFRIRIFITYMDNWRQNTTAEQEALQAKVDAENFYVILYLMVMIGMFSFIIVAILVS<br>TVKSKRREHSNDPYHQYIVEDWQEKYKSQILNLEESKATIHENIGAAGFKMSP                      |
|                                       | <b>TRTRPLEQKLISEEDLAANDILDYKDDDDKV</b>   |
| Tag:                                  | C-Myc/DDK  |
| Predicted MW:                         | 14.3 kDa   |
| Concentration:                        | >0.05 µg/µL as determined by microplate BCA method   |
| Purity:                               | > 80% as determined by SDS-PAGE and Coomassie blue staining  |
| Buffer:                               | 25 mM Tris-HCl, 100 mM glycine, pH 7.3, 10% glycerol   |
| Preparation:                          | Recombinant protein was captured through anti-DDK affinity column followed by conventional chromatography steps.                                     |
| Note:                                 | For testing in cell culture applications, please filter before use. Note that you may experience some loss of protein during the filtration process. |
| Storage:                              | Store at -80°C.  |
| Stability:                            | Stable for 12 months from the date of receipt of the product under proper storage and handling conditions. Avoid repeated freeze-thaw cycles.        |
| RefSeq:                               | <a href="#">NP_751951</a>  |
| Locus ID:                             | 9992   |
| UniProt ID:                           | <a href="#">Q9Y6J6</a>   |
| RefSeq Size:                          | 809  |



[View online »](#)

Cytogenetics: 21q22.11

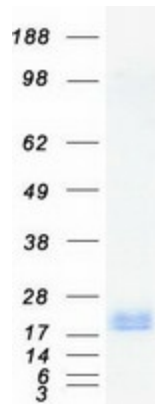
RefSeq ORF: 369

Synonyms: ATFB4; LQT5; LQT6; MIRP1

**Summary:** Voltage-gated potassium (Kv) channels represent the most complex class of voltage-gated ion channels from both functional and structural standpoints. Their diverse functions include regulating neurotransmitter release, heart rate, insulin secretion, neuronal excitability, epithelial electrolyte transport, smooth muscle contraction, and cell volume. This gene encodes a member of the potassium channel, voltage-gated, isk-related subfamily. This member is a small integral membrane subunit that assembles with the KCNH2 gene product, a pore-forming protein, to alter its function. This gene is expressed in heart and muscle and the gene mutations are associated with cardiac arrhythmia. [provided by RefSeq, Jul 2008]

**Protein Families:** Druggable Genome, Transmembrane

### Product images:



Coomassie blue staining of purified KCNE2 protein (Cat# TP311320). The protein was produced from HEK293T cells transfected with KCNE2 cDNA clone (Cat# [RC211320]) using MegaTran 2.0 (Cat# [TT210002]).