

## Product datasheet for TP311315L

### CPO (NM\_173077) Human Recombinant Protein

#### Product data:

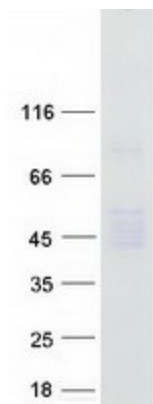
Product Type:	Recombinant Proteins
Description:	Recombinant protein of human carboxypeptidase O (CPO), 1 mg
Species:	Human
Expression Host:	HEK293T
Expression cDNA Clone or AA Sequence:	>RC211315 protein sequence Red=Cloning site Green=Tags(s)
	MKPLLETLYLLGMLVPGGLGYDRSLAQHRQEIVDKSVSPWSLETYSYNIYHPMGEIYEWWMREISEKYKEV VTQHFLGVTYETHPIYYLKISQPSGNPKKIIWMDCGIHAREWIAPAFQWVKEILQNHKDNSRIRKLLR NLDFYVLPVLNIDGYIYTWTDRDLWRKSRSPHNNGTCFGTDLNRNFNASWCSIGASRNCQDQTFCGTGPV SEPETKAVASFIESKKDDILCFLTMHSYGQLILTPYGTKNKSSNHPEMIQVQGKAANALKAKYGTNYRV GSSADILYASSGSSRDWARDIGIPFSYTFELRDSGTYGTVLPEAQIQPTCEETMEAVLSVLDDVYAKHWH SDSAGRVTSATMLLGLLVSCMSLL
	TRTRPLEQKLISEEDLAANDILDYKDDDDKV
Tag:	C-Myc/DDK
Predicted MW:	42.3 kDa
Concentration:	>0.05 µg/µL as determined by microplate BCA method
Purity:	> 80% as determined by SDS-PAGE and Coomassie blue staining
Buffer:	25 mM Tris-HCl, 100 mM glycine, pH 7.3, 10% glycerol
Preparation:	Recombinant protein was captured through anti-DDK affinity column followed by conventional chromatography steps.
Note:	For testing in cell culture applications, please filter before use. Note that you may experience some loss of protein during the filtration process.
Storage:	Store at -80°C.
Stability:	Stable for 12 months from the date of receipt of the product under proper storage and handling conditions. Avoid repeated freeze-thaw cycles.
RefSeq:	<a href="#">NP_775100</a>
Locus ID:	130749



[View online »](#)

UniProt ID:	<a href="#">Q8IVL8</a>
RefSeq Size:	1209
Cytogenetics:	2q33.3
RefSeq ORF:	1122
Summary:	This gene is a member of the metallocarboxypeptidase gene family. [provided by RefSeq, Jan 2011]
Protein Families:	Druggable Genome, Protease, Secreted Protein

### Product images:



Coomassie blue staining of purified CPO protein (Cat# [TP311315]). The protein was produced from HEK293T cells transfected with CPO cDNA clone (Cat# [RC211315]) using MegaTran 2.0 (Cat# [TT210002]).