

Product datasheet for TP311313M

MBD3L1 (NM_145208) Human Recombinant Protein

Product data:

Product Type:	Recombinant Proteins
Description:	Recombinant protein of human methyl-CpG binding domain protein 3-like 1 (MBD3L1), 100 µg
Species:	Human
Expression Host:	HEK293T
Expression cDNA Clone or AA Sequence:	>RC211313 protein sequence Red=Cloning site Green=Tags(s)
	MAKSSQRKQRDCVNQCKSKPGLSTSIPLRMSSYTFKRPVTRITPHPGNEVRYHQWEESLEKPQQVCWQRR LQGLQAYSSAGELSSTLDLANTLQKLVPSYTGGSLLDLASGLEHSCMPHPLACSSDAVEIIPAEGVGIS QLLCKQFLVTEEDIRKQEGKVKTVRERLAIADGLANEAEKVRDQEGCPEKR
	TRTRPLEQKLISEEDLAANDILDYKDDDDKV
Tag:	C-Myc/DDK
Predicted MW:	21.4 kDa
Concentration:	>0.05 µg/µL as determined by microplate BCA method
Purity:	> 80% as determined by SDS-PAGE and Coomassie blue staining
Buffer:	25 mM Tris-HCl, 100 mM glycine, pH 7.3, 10% glycerol
Preparation:	Recombinant protein was captured through anti-DDK affinity column followed by conventional chromatography steps.
Note:	For testing in cell culture applications, please filter before use. Note that you may experience some loss of protein during the filtration process.
Storage:	Store at -80°C.
Stability:	Stable for 12 months from the date of receipt of the product under proper storage and handling conditions. Avoid repeated freeze-thaw cycles.
RefSeq:	<u>NP_660209</u>
Locus ID:	85509
UniProt ID:	<u>Q8WWY6</u>
RefSeq Size:	748



[View online »](#)

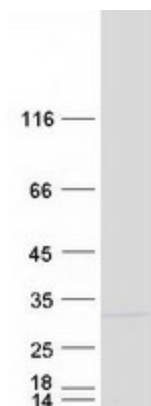
Cytogenetics: 19p13.2

RefSeq ORF: 582

Synonyms: MBD3L

Summary: This gene encodes a protein that is related to methyl-CpG-binding proteins but lacks the methyl-CpG binding domain. The protein is localized to discrete areas in the nucleus, and expression appears to be restricted to round spermatids, suggesting that the protein plays a role in the postmeiotic stages of male germ cell development. [provided by RefSeq, Jul 2008]

Product images:



Coomassie blue staining of purified MBD3L1 protein (Cat# [TP311313]). The protein was produced from HEK293T cells transfected with MBD3L1 cDNA clone (Cat# [RC211313]) using MegaTran 2.0 (Cat# [TT210002]).