

Product datasheet for **TP311299L**

Casein Kinase 2 beta (CSNK2B) (NM_001320) Human Recombinant Protein

Product data:

Product Type: Recombinant Proteins

Description: Recombinant protein of human casein kinase 2, beta polypeptide (CSNK2B), 1 mg

Species: Human

Expression Host: HEK293T

**Expression cDNA Clone
or AA Sequence:** >RC211299 protein sequence
Red=Cloning site **Green**=Tags(s)

MSSSEEVSWISWFCGLRGNEFFCEVDEDEYIQDKFNLTGLNEQVPHYRQALDMILDLEPDEELEDNPNQSD
LIEQAAEMLYGLIHARYILTNRGIAQMLEKYQQGDFGYCPRVYCENQPMLPIGLSDIPGEAMVKLYCPKC
MDVYTPKSSRHHHTDGAYFGTGFPHMLFMVHPEYRPKRPAHQFVPRLYGFKIHPMAYQLQLQAASNFKSP
VKTIR

TRTRPLEQKLISEEDLAANDILDYKDDDDKV

Tag: C-Myc/DDK

Predicted MW: 24.8 kDa

Concentration: >0.05 µg/µL as determined by microplate BCA method

Purity: > 80% as determined by SDS-PAGE and Coomassie blue staining

Buffer: 25 mM Tris-HCl, 100 mM glycine, pH 7.3, 10% glycerol

Preparation: Recombinant protein was captured through anti-DDK affinity column followed by conventional chromatography steps.

Note: For testing in cell culture applications, please filter before use. Note that you may experience some loss of protein during the filtration process.

Storage: Store at -80°C.

Stability: Stable for 12 months from the date of receipt of the product under proper storage and handling conditions. Avoid repeated freeze-thaw cycles.

RefSeq: [NP_001311](#)

Locus ID: 1460

UniProt ID: [P67870](#), [N0E4C7](#)



[View online »](#)

RefSeq Size: 1149

Cytogenetics: 6p21.33

RefSeq ORF: 645

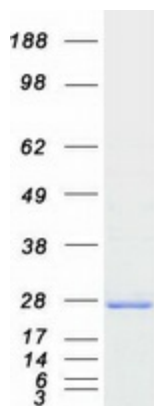
Synonyms: CK2B; CK2N; Ckb1; Ckb2; CSK2B; G5A; POBINDS

Summary: This gene encodes the beta subunit of casein kinase II, a ubiquitous protein kinase which regulates metabolic pathways, signal transduction, transcription, translation, and replication. The enzyme is composed of three subunits, alpha, alpha prime and beta, which form a tetrameric holoenzyme. The alpha and alpha prime subunits are catalytic, while the beta subunit serves regulatory functions. The enzyme localizes to the endoplasmic reticulum and the Golgi apparatus. Two transcript variants encoding different isoforms have been found for this gene. [provided by RefSeq, Sep 2013]

Protein Families: Druggable Genome

Protein Pathways: Adherens junction, Tight junction, Wnt signaling pathway

Product images:



Coomassie blue staining of purified CSNK2B protein (Cat# [TP311299]). The protein was produced from HEK293T cells transfected with CSNK2B cDNA clone (Cat# [RC211299]) using MegaTran 2.0 (Cat# [TT210002]).