

Product datasheet for TP311295M

ODF4 (NM_153007) Human Recombinant Protein

Product data:

Product Type:	Recombinant Proteins
Description:	Recombinant protein of human outer dense fiber of sperm tails 4 (ODF4), 100 µg
Species:	Human
Expression Host:	HEK293T
Expression cDNA Clone or AA Sequence:	>RC211295 protein sequence Red =Cloning site Green =Tags(s)
	 MDAEYSGNEFPRSEGERDQHQRPGKERKSGEAGRGTGELGQDGRLLSSTLSLSSNRSLGQRQNSPLPFQW RITHSFRWMAQVLASELSLVAFILLVMAFSKKWLDLSRSLFYQRWPDVSNRIHTSAHVMSMGLLHFCK SRSCSDLENGKVTFIESTLMLFPINIWIFELERNVSIPIGWSYFIGWLVLILYFTCAILCYFNHKSFWSL ILSHPSGAVSCSSSFGSVEESPRAQTITDTPITQEGVLDPEQKDTHV TRTRPLEQKLISEEDLAANDILDYKDDDDKV
Tag:	C-Myc/DDK
Predicted MW:	29.1 kDa
Concentration:	>0.05 µg/µL as determined by microplate BCA method
Purity:	> 80% as determined by SDS-PAGE and Coomassie blue staining
Buffer:	25 mM Tris-HCl, 100 mM glycine, pH 7.3, 10% glycerol
Preparation:	Recombinant protein was captured through anti-DDK affinity column followed by conventional chromatography steps.
Note:	For testing in cell culture applications, please filter before use. Note that you may experience some loss of protein during the filtration process.
Storage:	Store at -80°C.
Stability:	Stable for 12 months from the date of receipt of the product under proper storage and handling conditions. Avoid repeated freeze-thaw cycles.
RefSeq:	NP_694552
Locus ID:	146852
UniProt ID:	Q2M2E3



[View online »](#)

RefSeq Size: 1149

Cytogenetics: 17p13.1

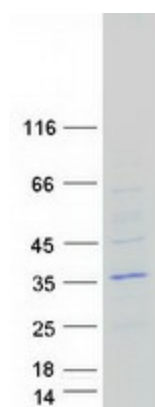
RefSeq ORF: 771

Synonyms: CT134; CT136; OPPO1

Summary: This gene encodes a protein that is localized in the outer dense fibers of the tails of mature sperm. This protein is thought to have some important role in the sperm tail. Alternative splicing results in multiple transcript variants. [provided by RefSeq, Feb 2016]

Protein Families: Transmembrane

Product images:



Coomassie blue staining of purified ODF4 protein (Cat# [TP311295]). The protein was produced from HEK293T cells transfected with ODF4 cDNA clone (Cat# [RC211295]) using MegaTran 2.0 (Cat# [TT210002]).