

Product datasheet for **TP311286L**

KRT24 (NM_019016) Human Recombinant Protein

Product data:

Product Type:	Recombinant Proteins
Description:	Recombinant protein of human keratin 24 (KRT24), 1 mg
Species:	Human
Expression Host:	HEK293T
Expression cDNA Clone or AA Sequence:	>RC211286 protein sequence Red =Cloning site Green =Tags(s)

MSCSSRASSSRAGGSSSRVSAGGSSSFSSGSRCLGGSSAQGFRGGASSCSLSGGSSGAFGGSFGGGFGS
 CSVGGGFGGASGSGTGFGGGSSFGGVSGFGRGSGFCGSSRFSSGATGGFYSGGGMGGGVGDGGLFSGG
 E
 KQTMQNLNDRNLANYLDKVRALAEANTDLENKIKEWYDKYGP GSGDGGSGRDYSKYYSIIEDLRNQIIAAT
 VENAGIILHIDNARLAADDFRLKYENELCLRQSVEADINGLRKVLDDLTMTRSDEM QIESFTEELAYLR
 KNHEEEMKNMQSSSGGEVTVMNAAPGDTLTKLLNDMRAQYEELAEQNRREAERFNKQSASLQAQIS
 TD
 AGAATS AKNEITELKRTLQALEIELQSQLAMKSSLEGTLADTEAGYVAQLSEIQTQISALEEEICQIWGE
 TKCQNAEYKQLLDIKTRLEVEIET YRRLLDGE GGGSSFAEFGGRNSG SVNMGSRDLVSGDSRSGSCSGQG
 RDSSKTRVTKTIVEELVDGKVVSSQVSSISEVKVK

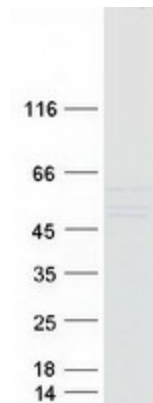
TRTRPLEQKLISEEDLAANDILDYKDDDDKV

Tag:	C-Myc/DDK
Predicted MW:	54.9 kDa
Concentration:	>0.05 µg/µL as determined by microplate BCA method
Purity:	> 80% as determined by SDS-PAGE and Coomassie blue staining
Buffer:	25 mM Tris-HCl, 100 mM glycine, pH 7.3, 10% glycerol
Preparation:	Recombinant protein was captured through anti-DDK affinity column followed by conventional chromatography steps.
Note:	For testing in cell culture applications, please filter before use. Note that you may experience some loss of protein during the filtration process.
Storage:	Store at -80°C.


[View online »](#)

Stability:	Stable for 12 months from the date of receipt of the product under proper storage and handling conditions. Avoid repeated freeze-thaw cycles.
RefSeq:	<u>NP_061889</u>
Locus ID:	192666
UniProt ID:	<u>Q2M2I5</u>
RefSeq Size:	1897
Cytogenetics:	17q21.2
RefSeq ORF:	1575
Synonyms:	K24; KA24
Summary:	This gene encodes a member of the type I (acidic) keratin family, which belongs to the superfamily of intermediate filament (IF) proteins. Keratins are heteropolymeric structural proteins which form the intermediate filament. These filaments, along with actin microfilaments and microtubules, compose the cytoskeleton of epithelial cells. The type I keratin genes are clustered in a region of chromosome 17q12-q21. [provided by RefSeq, Jun 2009]

Product images:



Coomassie blue staining of purified KRT24 protein (Cat# [TP311286]). The protein was produced from HEK293T cells transfected with KRT24 cDNA clone (Cat# [RC211286]) using MegaTran 2.0 (Cat# [TT210002]).