

## Product datasheet for **TP311283L**

### **KCTD16 (NM\_020768) Human Recombinant Protein**

#### **Product data:**

<b>Product Type:</b>	Recombinant Proteins
<b>Description:</b>	Recombinant protein of human potassium channel tetramerisation domain containing 16 (KCTD16), 1 mg
<b>Species:</b>	Human
<b>Expression Host:</b>	HEK293T
<b>Expression cDNA Clone or AA Sequence:</b>	>RC211283 protein sequence <b>Red</b> =Cloning site <b>Green</b> =Tags(s)
	<p>MALSGNCSRYYPREQGSAVPNSFPEWVELNVGGQVYFTRHSTLISIPHSLLWKMFSPKRDTANDLAKDSK  GRFFIDRDGFLFRYILDYLRDRQVVLDPHFPEKGRLKREAEYFQLPDLVKLLTPDEIKQSPDEFCHSDFE  DASQGS DTRICPPSSLLPADRKWGFITVGYRG SCTLGREGQADAKFRRVPRILVCGRISLAKEVFGETLN  ESRDPDRAPERYSRFYLFKHLERAFDMLSECGFHMVACNSSVTASFINQYTDDKIWSSYTEYVFYREP  SRWSPSHCDCCCKNGKGDKEGESGTSCNDLSTSSCDSQSEASSPQETVICGPVTRQTNIQTLDRPIKKG  VQLIQQSEMRRKSDLLRTLTSGRSRESNMSSKKKAVKEKLSIEEELEKCIQDFLKIKIPDRFPERKHPWQS  ELLRKYHL</p> <p><b>TRTRPLEQKLISEEDLAANDILDYKDDDDKV</b></p>
<b>Tag:</b>	C-Myc/DDK
<b>Predicted MW:</b>	49 kDa
<b>Concentration:</b>	>0.05 µg/µL as determined by microplate BCA method
<b>Purity:</b>	> 80% as determined by SDS-PAGE and Coomassie blue staining
<b>Buffer:</b>	25 mM Tris-HCl, 100 mM glycine, pH 7.3, 10% glycerol
<b>Preparation:</b>	Recombinant protein was captured through anti-DDK affinity column followed by conventional chromatography steps.
<b>Note:</b>	For testing in cell culture applications, please filter before use. Note that you may experience some loss of protein during the filtration process.
<b>Storage:</b>	Store at -80°C.
<b>Stability:</b>	Stable for 12 months from the date of receipt of the product under proper storage and handling conditions. Avoid repeated freeze-thaw cycles.



[View online »](#)

RefSeq: NP\_065819

Locus ID: 57528

UniProt ID: Q68DU8

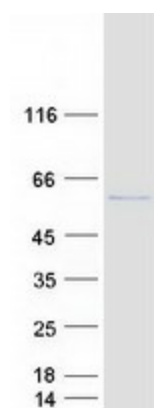
RefSeq Size: 5183

Cytogenetics: 5q31.3

RefSeq ORF: 1284

**Summary:** Auxiliary subunit of GABA-B receptors that determine the pharmacology and kinetics of the receptor response. Increases agonist potency and markedly alter the G-protein signaling of the receptors by accelerating onset and promoting desensitization (By similarity).  
[UniProtKB/Swiss-Prot Function]

## Product images:



Coomassie blue staining of purified KCTD16 protein (Cat# [TP311283]). The protein was produced from HEK293T cells transfected with KCTD16 cDNA clone (Cat# [RC211283]) using MegaTran 2.0 (Cat# [TT210002]).