

Product datasheet for TP311283

KCTD16 (NM_020768) Human Recombinant Protein

Product data:

Product Type:	Recombinant Proteins
Description:	Recombinant protein of human potassium channel tetramerisation domain containing 16 (KCTD16), 20 µg
Species:	Human
Expression Host:	HEK293T
Expression cDNA Clone or AA Sequence:	>RC211283 protein sequence Red =Cloning site Green =Tags(s)

MALSGNCSRYYPREQGSAVPNSFPEVELNVGGQVYFTRHSTLISIPHSLLWKMFSFKRDTANDLAKDSK
GRFFIDRDGFLFRYILDYLRDRQVLPDHFPEKGRLKREAEYFQLPDLVLLTPDEIKQSPDEFCHSDFE
DASQGS DTRICPPSSLLPADRKWGFITVGYRGSCTLGREGQADAKFRRVPRILVCGRISLAKEVFGETLN
ESRDPDRAPERYSRYFLKFKHLERAFDMLSECGFHMVACNSSVTASFINQYTDKDWSSYTEYVFYREP
SRWSPSHDCCKNGKGDKEGESGTSCNDLSTSSCDSQSEASSPQETVICGPVTRQTNIQTLDRPIKGGP
VQLIQQSEMRRKSDLLRRTLTSGRSRESNMSSKKKAVKEKLSIEEELEKCIQDFLKIKIPDRFPERKHPWQS
ELLRKYHL

TRTRPLEQKLISEEDLAANDILDYKDDDDKV

Tag:	C-Myc/DDK
Predicted MW:	49 kDa
Concentration:	>0.05 µg/µL as determined by microplate BCA method
Purity:	> 80% as determined by SDS-PAGE and Coomassie blue staining
Buffer:	25 mM Tris-HCl, 100 mM glycine, pH 7.3, 10% glycerol
Preparation:	Recombinant protein was captured through anti-DDK affinity column followed by conventional chromatography steps.
Note:	For testing in cell culture applications, please filter before use. Note that you may experience some loss of protein during the filtration process.
Storage:	Store at -80°C.
Stability:	Stable for 12 months from the date of receipt of the product under proper storage and handling conditions. Avoid repeated freeze-thaw cycles.



[View online »](#)

RefSeq: [NP_065819](#)

Locus ID: 57528

UniProt ID: [Q68DU8](#), [A8K8W2](#)

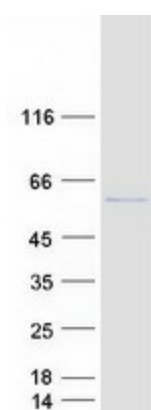
RefSeq Size: 5183

Cytogenetics: 5q31.3

RefSeq ORF: 1284

Summary: Auxiliary subunit of GABA-B receptors that determine the pharmacology and kinetics of the receptor response. Increases agonist potency and markedly alter the G-protein signaling of the receptors by accelerating onset and promoting desensitization (By similarity).
[UniProtKB/Swiss-Prot Function]

Product images:



Coomassie blue staining of purified KCTD16 protein (Cat# TP311283). The protein was produced from HEK293T cells transfected with KCTD16 cDNA clone (Cat# [RC211283]) using MegaTran 2.0 (Cat# [TT210002]).