

Product datasheet for **TP311275M**

SLURP1 (NM_020427) Human Recombinant Protein

Product data:

Product Type:	Recombinant Proteins
Description:	Recombinant protein of human secreted LY6/PLAUR domain containing 1 (SLURP1), 100 µg
Species:	Human
Expression Host:	HEK293T
Expression cDNA Clone or AA Sequence:	>RC211275 protein sequence Red =Cloning site Green =Tags(s)
	MASRWAVQLLLVAAWSMGCGEALKCYTCKEPMTSASCRTITRCKPEDTACMTTLVTVEAEYFPNQSPWV RSCSSSVATDPDSIGAAHLIFCCFRDLCNSEL
	TRTRPLEQKLISEEDLAANDILDYKDDDDKV
Tag:	C-Myc/DDK
Predicted MW:	8.9 kDa
Concentration:	>0.05 µg/µL as determined by microplate BCA method
Purity:	> 80% as determined by SDS-PAGE and Coomassie blue staining
Buffer:	25 mM Tris-HCl, 100 mM glycine, pH 7.3, 10% glycerol
Preparation:	Recombinant protein was captured through anti-DDK affinity column followed by conventional chromatography steps.
Note:	For testing in cell culture applications, please filter before use. Note that you may experience some loss of protein during the filtration process.
Storage:	Store at -80°C.
Stability:	Stable for 12 months from the date of receipt of the product under proper storage and handling conditions. Avoid repeated freeze-thaw cycles.
RefSeq:	NP_065160
Locus ID:	57152
UniProt ID:	P55000
RefSeq Size:	537
Cytogenetics:	8q24.3



[View online »](#)

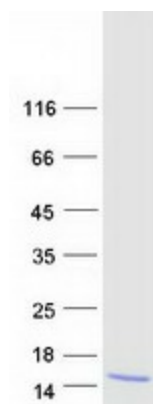
RefSeq ORF: 309

Synonyms: ANUP; ARS; ArsB; LY6-MT; LY6LS; MDM

Summary: The protein encoded by this gene is a member of the Ly6/uPAR family but lacks a GPI-anchoring signal sequence. It is thought that this secreted protein contains antitumor activity. Mutations in this gene have been associated with Mal de Meleda, a rare autosomal recessive skin disorder. This gene maps to the same chromosomal region as several members of the Ly6/uPAR family of glycoprotein receptors. [provided by RefSeq, Jul 2008]

Protein Families: Druggable Genome, Secreted Protein

Product images:



Coomassie blue staining of purified SLURP1 protein (Cat# [TP311275]). The protein was produced from HEK293T cells transfected with SLURP1 cDNA clone (Cat# [RC211275]) using MegaTran 2.0 (Cat# [TT210002]).