

## Product datasheet for **TP311275L**

### SLURP1 (NM\_020427) Human Recombinant Protein

#### Product data:

Product Type:	Recombinant Proteins
Description:	Recombinant protein of human secreted LY6/PLAUR domain containing 1 (SLURP1), 1 mg
Species:	Human
Expression Host:	HEK293T
Expression cDNA Clone or AA Sequence:	>RC211275 protein sequence <b>Red</b> =Cloning site <b>Green</b> =Tags(s)
	MASRWAVQLLLVAAWSMGCGEALKCYTCKEPMTSASCRTITRCKPEDTACMTTLVTVEAEYFPNQSPWTRSCSSSVATDPDSIGAAHLIFCCFRDLCNSEL
	<b>TR</b> TRPLEQKLISEEDLAANDILDYKDDDDKV
Tag:	C-Myc/DDK
Predicted MW:	8.9 kDa
Concentration:	>0.05 µg/µL as determined by microplate BCA method
Purity:	> 80% as determined by SDS-PAGE and Coomassie blue staining
Buffer:	25 mM Tris-HCl, 100 mM glycine, pH 7.3, 10% glycerol
Preparation:	Recombinant protein was captured through anti-DDK affinity column followed by conventional chromatography steps.
Note:	For testing in cell culture applications, please filter before use. Note that you may experience some loss of protein during the filtration process.
Storage:	Store at -80°C.
Stability:	Stable for 12 months from the date of receipt of the product under proper storage and handling conditions. Avoid repeated freeze-thaw cycles.
RefSeq:	<a href="#">NP_065160</a>
Locus ID:	57152
UniProt ID:	<a href="#">P55000</a>
RefSeq Size:	537
Cytogenetics:	8q24.3



[View online »](#)

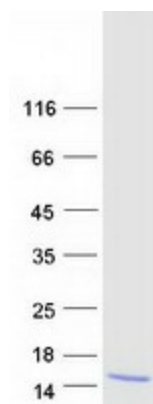
RefSeq ORF: 309

Synonyms: ANUP; ARS; ArsB; LY6-MT; LY6LS; MDM

**Summary:** The protein encoded by this gene is a member of the Ly6/uPAR family but lacks a GPI-anchoring signal sequence. It is thought that this secreted protein contains antitumor activity. Mutations in this gene have been associated with Mal de Meleda, a rare autosomal recessive skin disorder. This gene maps to the same chromosomal region as several members of the Ly6/uPAR family of glycoprotein receptors. [provided by RefSeq, Jul 2008]

**Protein Families:** Druggable Genome, Secreted Protein

### Product images:



Coomassie blue staining of purified SLURP1 protein (Cat# [TP311275]). The protein was produced from HEK293T cells transfected with SLURP1 cDNA clone (Cat# [RC211275]) using MegaTran 2.0 (Cat# [TT210002]).