

## Product datasheet for **TP311257M**

### DEC R1 (NM\_001359) Human Recombinant Protein

#### Product data:

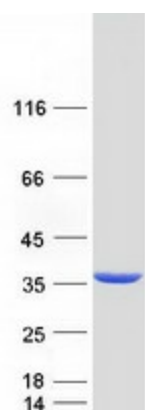
Product Type:	Recombinant Proteins
Description:	Recombinant protein of human 2,4-dienoyl CoA reductase 1, mitochondrial (DEC R1), nuclear gene encoding mitochondrial protein, 100 µg
Species:	Human
Expression Host:	HEK293T
Expression cDNA Clone or AA Sequence:	>RC211257 protein sequence <b>Red</b> =Cloning site <b>Green</b> =Tags(s)
	<p>MKLPARVFFTLGSRLPCGLAPRRFFSYGTKILYQNTALQSKFFSPLQKAMLPPNSFQGVAFITGGGTG LGKGM TLLSSLGAQCVIASRKMDVLKATAEQISSQTGNKVHAIQCDVRDPDMVQNTVSELIKVAGHPNI VINNAAGNFISPTERLSPNAWKITDIVLNGTAFVTLEIGKQLIKAQKGA AFLSITTIYAETGSGFVPS ASAKAGVEAMSKSLAAEWGKYGMRFNVIQPGPIKTKGAFSRLDPTGTFEKEMIGRIPCGR LGTVEELANL AAFLCSDYASWINGAVIKFDGGEEVLISGEFNDLRKVTKEQWDTIEELIRKTKGS</p> <p><b>TRTRPLEQKLISEEDLAANDILDYKDDDDKV</b></p>
Tag:	C-Myc/DDK
Predicted MW:	32.1 kDa
Concentration:	>0.05 µg/µL as determined by microplate BCA method
Purity:	> 80% as determined by SDS-PAGE and Coomassie blue staining
Buffer:	25 mM Tris-HCl, 100 mM glycine, pH 7.3, 10% glycerol
Preparation:	Recombinant protein was captured through anti-DDK affinity column followed by conventional chromatography steps.
Note:	For testing in cell culture applications, please filter before use. Note that you may experience some loss of protein during the filtration process.
Storage:	Store at -80°C.
Stability:	Stable for 12 months from the date of receipt of the product under proper storage and handling conditions. Avoid repeated freeze-thaw cycles.
RefSeq:	<a href="#">NP_001350</a>
Locus ID:	1666



[View online »](#)

UniProt ID:	<a href="#">Q16698</a> , <a href="#">A0A024R9D7</a>
RefSeq Size:	1251
Cytogenetics:	8q21.3
RefSeq ORF:	1005
Synonyms:	DECR; NADPH; SDR18C1
Summary:	This gene encodes an accessory enzyme which participates in the beta-oxidation and metabolism of unsaturated fatty enoyl-CoA esters. [provided by RefSeq, Jul 2008]
Protein Families:	Druggable Genome

### Product images:



Coomassie blue staining of purified DECR1 protein (Cat# [TP311257]). The protein was produced from HEK293T cells transfected with DECR1 cDNA clone (Cat# [RC211257]) using MegaTran 2.0 (Cat# [TT210002]).