

Product datasheet for TP311255L

LRPAP1 (NM_002337) Human Recombinant Protein

Product data:

Product Type:	Recombinant Proteins
Description:	Recombinant protein of human low density lipoprotein receptor-related protein associated protein 1 (LRPAP1), 1 mg
Species:	Human
Expression Host:	HEK293T
Expression cDNA Clone or AA Sequence:	>RC211255 protein sequence Red =Cloning site Green =Tags(s)
	<p>MAPRRVRSFLRGLPALLLLLLFLGPWPAASHGGKYSREKNQPKPSPKRESGEEFRMEKLNQLWEKAQRLH LPPVRLAELHADLKIQRDELAWKKLKDGLDEEDGEKEARLIRNLNVILAKYGLDGKKDARQVTSNSLSG TQEDGLDDPRLEKLWHKAKTSGKFSGEELDKLWREFLHHKEKVHEYNVLLETLSRTEEIHENVISPSDLS DIKGSVLHSRHELKEKLRINQGLDRLRRVSHQGYSTAEFEPRVIDLWDLAQSANLTDKELEAFREE LKHFEAKIEKHNHYQKQLEIAHEKLRHAESVGDGERVSRSEKHALLEGRTKELGYTVKKHLQDLSGRIS RARHNEL</p> <p>TRTRPLEQKLISEEDLAANDILDYKDDDDKV</p>
Tag:	C-Myc/DDK
Predicted MW:	37.7 kDa
Concentration:	>0.05 µg/µL as determined by microplate BCA method
Purity:	> 80% as determined by SDS-PAGE and Coomassie blue staining
Buffer:	25 mM Tris-HCl, 100 mM glycine, pH 7.3, 10% glycerol
Preparation:	Recombinant protein was captured through anti-DDK affinity column followed by conventional chromatography steps.
Note:	For testing in cell culture applications, please filter before use. Note that you may experience some loss of protein during the filtration process.
Storage:	Store at -80°C.
Stability:	Stable for 12 months from the date of receipt of the product under proper storage and handling conditions. Avoid repeated freeze-thaw cycles.
RefSeq:	<u>NP_002328</u>



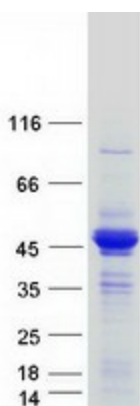
[View online »](#)

Locus ID:	4043
UniProt ID:	P30533
RefSeq Size:	10536
Cytogenetics:	4p16.3
RefSeq ORF:	1071
Synonyms:	A2MRAP; A2RAP; alpha-2-MRAP; HBP44; MRAP; MYP23; RAP

Summary: This gene encodes a protein that interacts with the low density lipoprotein (LDL) receptor-related protein and facilitates its proper folding and localization by preventing the binding of ligands. Mutations in this gene have been identified in individuals with myopia 23. Alternative splicing results in multiple transcript variants. [provided by RefSeq, Dec 2013]

Protein Families: Druggable Genome, Transmembrane

Product images:



Coomassie blue staining of purified LRPAP1 protein (Cat# [TP311255]). The protein was produced from HEK293T cells transfected with LRPAP1 cDNA clone (Cat# [RC211255]) using MegaTran 2.0 (Cat# [TT210002]).