

Product datasheet for **TP311241M**

SPC24 (NM_182513) Human Recombinant Protein

Product data:

| | |
|---------------------------------------|--|
| Product Type: | Recombinant Proteins |
| Description: | Recombinant protein of human SPC24, NDC80 kinetochore complex component, homolog (S. cerevisiae) (SPC24), 100 µg |
| Species: | Human |
| Expression Host: | HEK293T |
| Expression cDNA Clone or AA Sequence: | >RC211241 protein sequence Red =Cloning site Green =Tags(s) |

MAAFRDIEEVSQGLLSLLGANRAEAQQRLLGRHEQVVERLLETQDGAEKQLREILTMEKEVAQSLNNAK
EQVHQGGVELQQLEAGLQEAGEEDTRLKASLLQLTRELEELKEIADLERQEKEVDEDTTIVTIPSAVYVA
QLYHQVSKIEWDYECEPGMVKGIHHGSPVAQPIHLDSTQLSRKFISDYLWLSLVDTEW

TRTRPLEQKLISEEDLAANDILDYKDDDDKV

| | |
|----------------|--|
| Tag: | C-Myc/DDK |
| Predicted MW: | 22.3 kDa |
| Concentration: | >0.05 µg/µL as determined by microplate BCA method |
| Purity: | > 80% as determined by SDS-PAGE and Coomassie blue staining |
| Buffer: | 25 mM Tris-HCl, 100 mM glycine, pH 7.3, 10% glycerol |
| Preparation: | Recombinant protein was captured through anti-DDK affinity column followed by conventional chromatography steps. |
| Note: | For testing in cell culture applications, please filter before use. Note that you may experience some loss of protein during the filtration process. |
| Storage: | Store at -80°C. |
| Stability: | Stable for 12 months from the date of receipt of the product under proper storage and handling conditions. Avoid repeated freeze-thaw cycles. |
| RefSeq: | NP_872319 |
| Locus ID: | 147841 |
| UniProt ID: | Q8NBT2 |



[View online »](#)

RefSeq Size: 654

Cytogenetics: 19p13.2

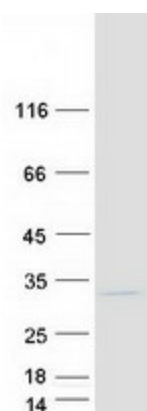
RefSeq ORF: 591

Synonyms: SPBC24

Summary: Acts as a component of the essential kinetochore-associated NDC80 complex, which is required for chromosome segregation and spindle checkpoint activity (PubMed:14738735). Required for kinetochore integrity and the organization of stable microtubule binding sites in the outer plate of the kinetochore (PubMed:14738735). The NDC80 complex synergistically enhances the affinity of the SKA1 complex for microtubules and may allow the NDC80 complex to track depolymerizing microtubules (PubMed:23085020).[UniProtKB/Swiss-Prot Function]

Protein Families: Druggable Genome

Product images:



Coomassie blue staining of purified SPC24 protein (Cat# [TP311241]). The protein was produced from HEK293T cells transfected with SPC24 cDNA clone (Cat# [RC211241]) using MegaTran 2.0 (Cat# [TT210002]).