

Product datasheet for **TP311241L**

SPC24 (NM_182513) Human Recombinant Protein

Product data:

Product Type:	Recombinant Proteins
Description:	Recombinant protein of human SPC24, NDC80 kinetochore complex component, homolog (S. cerevisiae) (SPC24), 1 mg
Species:	Human
Expression Host:	HEK293T
Expression cDNA Clone or AA Sequence:	>RC211241 protein sequence Red =Cloning site Green =Tags(s)
	 MAAFRDIEEVSQGLLSLLGANRAEAQQRLLGRHEQVVERLLETQDGAEKQLREILTMEKEVAQSLNNAK EQVHQGGVELQQLEAGLQEAGEEDTRLKASLLQLTRELEELKEIADLERQEKEVDEDTTIVTIPSAVYVA QLYHQVSKIEWDYECEPGMVKGIHHGSPVAQPIHLDSTQLSRKFISDYLWLSLVDETEW TRTRPLEQKLISEEDLAANDILDYKDDDDKV
Tag:	C-Myc/DDK
Predicted MW:	22.3 kDa
Concentration:	>0.05 µg/µL as determined by microplate BCA method
Purity:	> 80% as determined by SDS-PAGE and Coomassie blue staining
Buffer:	25 mM Tris-HCl, 100 mM glycine, pH 7.3, 10% glycerol
Preparation:	Recombinant protein was captured through anti-DDK affinity column followed by conventional chromatography steps.
Note:	For testing in cell culture applications, please filter before use. Note that you may experience some loss of protein during the filtration process.
Storage:	Store at -80°C.
Stability:	Stable for 12 months from the date of receipt of the product under proper storage and handling conditions. Avoid repeated freeze-thaw cycles.
RefSeq:	NP_872319
Locus ID:	147841
UniProt ID:	Q8NBT2



[View online »](#)

RefSeq Size: 654

Cytogenetics: 19p13.2

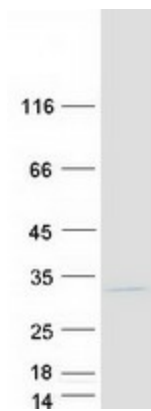
RefSeq ORF: 591

Synonyms: SPBC24

Summary: Acts as a component of the essential kinetochore-associated NDC80 complex, which is required for chromosome segregation and spindle checkpoint activity (PubMed:14738735). Required for kinetochore integrity and the organization of stable microtubule binding sites in the outer plate of the kinetochore (PubMed:14738735). The NDC80 complex synergistically enhances the affinity of the SKA1 complex for microtubules and may allow the NDC80 complex to track depolymerizing microtubules (PubMed:23085020).[UniProtKB/Swiss-Prot Function]

Protein Families: Druggable Genome

Product images:



Coomassie blue staining of purified SPC24 protein (Cat# [TP311241]). The protein was produced from HEK293T cells transfected with SPC24 cDNA clone (Cat# [RC211241]) using MegaTran 2.0 (Cat# [TT210002]).