

## Product datasheet for TP311235

### PIP3E (IPCEF1) (NM\_015553) Human Recombinant Protein

#### Product data:

Product Type:	Recombinant Proteins
Description:	Recombinant protein of human interaction protein for cytohesin exchange factors 1 (IPCEF1), transcript variant 3, 20 µg
Species:	Human
Expression Host:	HEK293T
Expression cDNA Clone or AA Sequence:	>RC211235 protein sequence Red=Cloning site Green=Tags(s)

MTSYMAIDGSALVPLRQKPRRKTQGFLTMSRRRISCKDLGHADCQGWLYKKKEKGSFLSNKWKKFWWILK  
GSSLYWYSNQMAEKADGFVNLPDFTVERASECKKKHAFKISHPQIKTFYFAAENVQEMNVWLNKLGSAVI  
HQESTTKDEECYSESEQEDPEIAAETPPPPHASQTQSLTAQQASSSSPSLSGTSYSFSSLENTVKTPTSS  
PSSLSKERQSLPDTVNLSAAEDEGQPITFAVQVHSPVPSEAGIHKALENSFVTSSEGLNSLSSDDTSS  
LSSNHDHLTVPDKPAGSKIMDKKEETKVSEDDMEKLYKSLEQASLSPLGDRRSTKKELRKSFKRCKNP  
SINEKLHKIRTLNSTLKCKEHLAMINQLLDDPKLTARKYREWKMNTLLIQDIYQQQRASPAPDDTDDT  
PQELKKSPSSPSVENS

TRTRPLEQKLISEEDLAANDILDYKDDDDKV

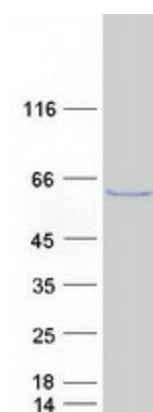
Tag:	C-Myc/DDK
Predicted MW:	48.8 kDa
Concentration:	>0.05 µg/µL as determined by microplate BCA method
Purity:	> 80% as determined by SDS-PAGE and Coomassie blue staining
Buffer:	25 mM Tris-HCl, 100 mM glycine, pH 7.3, 10% glycerol
Preparation:	Recombinant protein was captured through anti-DDK affinity column followed by conventional chromatography steps.
Note:	For testing in cell culture applications, please filter before use. Note that you may experience some loss of protein during the filtration process.
Storage:	Store at -80°C.
Stability:	Stable for 12 months from the date of receipt of the product under proper storage and handling conditions. Avoid repeated freeze-thaw cycles.



[View online »](#)

RefSeq:	<a href="#">NP_056368</a>
Locus ID:	26034
UniProt ID:	<a href="#">Q8WWN9</a>
RefSeq Size:	6815
Cytogenetics:	6q25.2
RefSeq ORF:	1311
Synonyms:	PIP3-E
Summary:	Enhances the promotion of guanine-nucleotide exchange by PSCD2 on ARF6 in a concentration-dependent manner.[UniProtKB/Swiss-Prot Function]

### Product images:



Coomassie blue staining of purified IPCEF1 protein (Cat# TP311235). The protein was produced from HEK293T cells transfected with IPCEF1 cDNA clone (Cat# [RC211235]) using MegaTran 2.0 (Cat# [TT210002]).