

## Product datasheet for **TP311220**

### EN2 (NM\_001427) Human Recombinant Protein

#### Product data:

Product Type:	Recombinant Proteins
Description:	Recombinant protein of human engrailed homeobox 2 (EN2), 20 µg
Species:	Human
Expression Host:	HEK293T
Expression cDNA Clone or AA Sequence:	>RC211220 representing NM_001427 <b>Red</b> =Cloning site <b>Green</b> =Tags(s)  MEENDPKPGEAAAAVEGQRQPESPPGGGSGGGGGSSPGEADTGRRRALMLPAVLQAPGNHQHPHRITNFF IDNILRPEFGRRKDAGTCCAGAGGGRRGGGAGGEGGASGAEGGGGAGGSEQLLGSGSREPRQNPPCAPGAG GPLPAAGSDSPGDGEGGSKTLSLHGGAKKGGDPGGPLDGSLKARGLGGGDLVSSSDSSQAGANLGAQP MLWPAWVYCTRYSDRPSSGPRSRKPKKKNPNKEDKRPRTAFTAEQLQLKAEFQTNRYLQEQRRQSLAQE LSLNESQIKIWFQNKRAKIKKATGNKNTLAVHLMAQGLYNHSTTAKEGKSDSE  <b>TRTRPLEQKLISEEDLAANDILDYKDDDDKV</b>
Tag:	C-Myc/DDK
Predicted MW:	34 kDa
Concentration:	>0.05 µg/µL as determined by microplate BCA method
Purity:	> 80% as determined by SDS-PAGE and Coomassie blue staining
Buffer:	25 mM Tris-HCl, 100 mM glycine, pH 7.3, 10% glycerol
Preparation:	Recombinant protein was captured through anti-DDK affinity column followed by conventional chromatography steps.
Note:	For testing in cell culture applications, please filter before use. Note that you may experience some loss of protein during the filtration process.
Storage:	Store at -80°C.
Stability:	Stable for 12 months from the date of receipt of the product under proper storage and handling conditions. Avoid repeated freeze-thaw cycles.
RefSeq:	<a href="#">NP_001418</a>
Locus ID:	2020



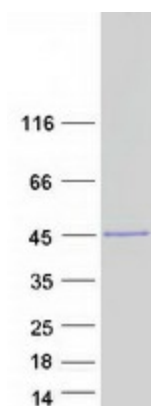
[View online »](#)

UniProt ID: [P19622](#)  
RefSeq Size: 3405  
Cytogenetics: 7q36.3  
RefSeq ORF: 999

**Summary:** Homeobox-containing genes are thought to have a role in controlling development. In *Drosophila*, the 'engrailed' (*en*) gene plays an important role during development in segmentation, where it is required for the formation of posterior compartments. Different mutations in the mouse homologs, *En1* and *En2*, produced different developmental defects that frequently are lethal. The human engrailed homologs 1 and 2 encode homeodomain-containing proteins and have been implicated in the control of pattern formation during development of the central nervous system. [provided by RefSeq, Jul 2008]

**Protein Families:** Druggable Genome, ES Cell Differentiation/IPS

### Product images:



Coomassie blue staining of purified EN2 protein (Cat# TP311220). The protein was produced from HEK293T cells transfected with EN2 cDNA clone (Cat# [RC211220]) using MegaTran 2.0 (Cat# [TT210002]).