

Product datasheet for TP311214L

PVRL1 (NECTIN1) (NM_002855) Human Recombinant Protein

Product data:

Product Type: Recombinant Proteins
Description: Recombinant protein of human poliovirus receptor-related 1 (herpesvirus entry mediator C) (PVRL1), transcript variant 1, 1 mg
Species: Human
Expression Host: HEK293T
Expression cDNA Clone or AA Sequence: >RC211214 protein sequence
Red=Cloning site **Green**=Tags(s)

MARMGLAGAAGRWWGLALGLTAFFLPGVHSQWVQVNDSEMYGFIGTDVWLHCSFANPLPSVKITQVTWQKS
TNGSKQNVAIYNPSMGVSVLAPYRERVEFLRPSFTDGTIRLSRLELEDEGVYICEFATFPTGNRESQLNL
TVMAKPTNWIEGTQAVLRAKKGQDDKVLVATCTSANGKPPSVSWWETRLKGEAEYQEIRNPNGTIVTISR
YRLVPSREAHQQLACIVNYHMDRFKESLTLNVQYEPEVTIEGFDGNWYLQRMDEVKLTCKADANPPATEY
HWTTLNGSLPKGVEAQNRLLFFKGPINYSLAGTYICEATNPIGTRSGQVEVNITEFPYTPSPPEHGRRAG
PVPTAIIIGGVAGSILLVLIVGGIIVALRRRHTFKGDYSTKKHVVYNGYKAGIPQHPPMAQNLQYPD
DSDDEKKAGPLGGSSYYYYYYYYGGGGGERKVGPPHPKYDEDAKRPYFTVDEAEARQDGYGDRTLGYQY
DPEQLDLAENMVSQNDGFSFKKEWYV

TRTRPLEQKLISEEDLAANDILDYKDDDDKV

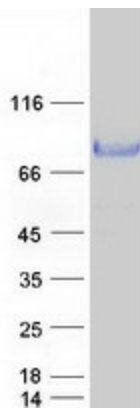
Tag: C-Myc/DDK
Predicted MW: 54 kDa
Concentration: >0.05 µg/µL as determined by microplate BCA method
Purity: > 80% as determined by SDS-PAGE and Coomassie blue staining
Buffer: 25 mM Tris-HCl, 100 mM glycine, pH 7.3, 10% glycerol
Preparation: Recombinant protein was captured through anti-DDK affinity column followed by conventional chromatography steps.
Note: For testing in cell culture applications, please filter before use. Note that you may experience some loss of protein during the filtration process.
Storage: Store at -80°C.



[View online »](#)

Stability:	Stable for 12 months from the date of receipt of the product under proper storage and handling conditions. Avoid repeated freeze-thaw cycles.
RefSeq:	NP_002846
Locus ID:	5818
UniProt ID:	Q15223
RefSeq Size:	5493
Cytogenetics:	11q23.3
RefSeq ORF:	1551
Synonyms:	CD111; CLPED1; ED4; HlgR; HV1S; HVEC; nectin-1; OFC7; PRR; PRR1; PVRL1; PVRR; PVRR1; SK-12
Summary:	This gene encodes an adhesion protein that plays a role in the organization of adherens junctions and tight junctions in epithelial and endothelial cells. The protein is a calcium(2+)-independent cell-cell adhesion molecule that belongs to the immunoglobulin superfamily and has 3 extracellular immunoglobulin-like loops, a single transmembrane domain (in some isoforms), and a cytoplasmic region. This protein acts as a receptor for glycoprotein D (gD) of herpes simplex viruses 1 and 2 (HSV-1, HSV-2), and pseudorabies virus (PRV) and mediates viral entry into epithelial and neuronal cells. Mutations in this gene cause cleft lip and palate/ectodermal dysplasia 1 syndrome (CLPED1) as well as non-syndromic cleft lip with or without cleft palate (CL/P). Alternative splicing results in multiple transcript variants encoding proteins with distinct C-termini. [provided by RefSeq, Oct 2009]
Protein Families:	Druggable Genome, ES Cell Differentiation/IPS, Transmembrane
Protein Pathways:	Adherens junction, Cell adhesion molecules (CAMs)

Product images:



Coomassie blue staining of purified NECTIN1 protein (Cat# [TP311214]). The protein was produced from HEK293T cells transfected with NECTIN1 cDNA clone (Cat# [RC211214]) using MegaTran 2.0 (Cat# [TT210002]).