

Product datasheet for TP311194L

GPCR MRGE (MRGPRE) (NM_001039165) Human Recombinant Protein

Product data:

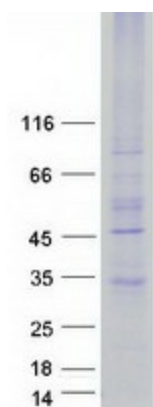
Product Type:	Recombinant Proteins
Description:	Recombinant protein of human MAS-related GPR, member E (MRGPRE), 1 mg
Species:	Human
Expression Host:	HEK293T
Expression cDNA Clone or AA Sequence:	>RC211194 protein sequence Red =Cloning site Green =Tags(s)
	<p>MEPREAGQHVGAAANGAQEDVAFNLIILSLTEGLGLGGLLNGAVLWLLSSNVYRNPFAIYLLDVACADLI FLGCHMVAIVPDLLQGRDLDFPGFVQTSLATLRFCCYIVGLSLLAAVSVEQCLAALFPWYSCRPRHLTT CVCALTWALCLLLHLLLSGACTQFFGEPSSRHLCRTLWLVAAVLLALLCCTMCGASLMLLRVERGPQRPP PRGFPGILLTVLLFLFCGLPFGIYWLSRNLLWYIPHYFYHFSFLMAAVHCAAKPVVYFCLGSAQGRRRLP LRLVLQRALGDEAELGAVRETSRRGLVDIAA</p> <p>TRTRPLEQKLISEEDLAANDILDYKDDDDKV</p>
Tag:	C-Myc/DDK
Predicted MW:	34 kDa
Concentration:	>0.05 µg/µL as determined by microplate BCA method
Purity:	> 80% as determined by SDS-PAGE and Coomassie blue staining
Buffer:	25 mM Tris-HCl, 100 mM glycine, pH 7.3, 10% glycerol
Preparation:	Recombinant protein was captured through anti-DDK affinity column followed by conventional chromatography steps.
Note:	For testing in cell culture applications, please filter before use. Note that you may experience some loss of protein during the filtration process.
Storage:	Store at -80°C.
Stability:	Stable for 12 months from the date of receipt of the product under proper storage and handling conditions. Avoid repeated freeze-thaw cycles.
RefSeq:	NP_001034254
Locus ID:	116534



[View online »](#)

UniProt ID:	Q86SM8 , W4VSO4
RefSeq Size:	1296
Cytogenetics:	11p15.4
RefSeq ORF:	933
Synonyms:	GPR167; MGRF; MRGE
Summary:	Orphan receptor. May regulate nociceptor function and/or development, including the sensation or modulation of pain.[UniProtKB/Swiss-Prot Function]
Protein Families:	Druggable Genome, Transmembrane

Product images:



Coomassie blue staining of purified MRGPRES protein (Cat# [TP311194]). The protein was produced from HEK293T cells transfected with MRGPRES cDNA clone (Cat# [RC211194]) using MegaTran 2.0 (Cat# [TT210002]).