

Product datasheet for TP311175M

TUBA8 (NM_018943) Human Recombinant Protein

Product data:

Product Type:	Recombinant Proteins
Description:	Recombinant protein of human tubulin, alpha 8 (TUBA8), 100 µg
Species:	Human
Expression Host:	HEK293T
Expression cDNA Clone or AA Sequence:	>RC211175 protein sequence Red =Cloning site Green =Tags(s)
	MRECISVHVGQAGVQIGNACWELFCLEHGIQADGTFDAQASKINDDDSFSTFFSETGNGKHVPRAVMIDL EPTVWDEVRAGTYRQLFHPEQLITGKEDAANNYARGHYTVGKESIDLVLDRIRKLTDACSGLQGFIFHS FGGGTGS GFSTLLMERLSLDYGGKSKLEFAIYPAPQVSTAVVEPYNSILTTHTTLEHSDCAFMDNEAIY DICRRNLDIRPTYTNLNRISQIVSSITASLRFDGALNVDLTEFQTNLVPYPRIHFPLVTYAPIISAEK AYHEQLSVAEITSSCFEPNSQMVKCDPRHGKYM ACCMLYRGD VVPKDVNVAIAAIKTKRTIQFVDWCPTG FKVGINYQPPTVPGGDLAKVQRAVCMLSNTTAIAEAWARLDHKFDLMYAKRAFVHWYV GEGMEEGEFSE AREDLAALEKDYEEVGTDSFEEENE GEEF
	TRTRPLEQKLISEEDLAANDILDYKDDDDKV
Tag:	C-Myc/DDK
Predicted MW:	49.9 kDa
Concentration:	>0.05 µg/µL as determined by microplate BCA method
Purity:	> 80% as determined by SDS-PAGE and Coomassie blue staining
Buffer:	25 mM Tris-HCl, 100 mM glycine, pH 7.3, 10% glycerol
Preparation:	Recombinant protein was captured through anti-DDK affinity column followed by conventional chromatography steps.
Note:	For testing in cell culture applications, please filter before use. Note that you may experience some loss of protein during the filtration process.
Storage:	Store at -80°C.
Stability:	Stable for 12 months from the date of receipt of the product under proper storage and handling conditions. Avoid repeated freeze-thaw cycles.
RefSeq:	<u>NP_061816</u>



[View online »](#)

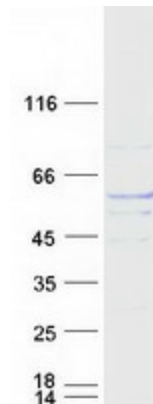
Locus ID: 51807
UniProt ID: [Q9NY65](#)
RefSeq Size: 2124
Cytogenetics: 22q11.21
RefSeq ORF: 1347
Synonyms: CDCBM8; TUBAL2

Summary: This gene encodes a member of the alpha tubulin protein family. Alpha tubulins are one of two core protein families (alpha and beta tubulins) that heterodimerize and assemble to form microtubules. Mutations in this gene are associated with polymicrogyria and optic nerve hypoplasia. Alternate splicing results in multiple transcript variants. [provided by RefSeq, Jul 2010]

Protein Families: Druggable Genome

Protein Pathways: Gap junction, Pathogenic Escherichia coli infection

Product images:



Coomassie blue staining of purified TUBA8 protein (Cat# [TP311175]). The protein was produced from HEK293T cells transfected with TUBA8 cDNA clone (Cat# [RC211175]) using MegaTran 2.0 (Cat# [TT210002]).