

## Product datasheet for TP311156L

### MCEMP1 (NM\_174918) Human Recombinant Protein

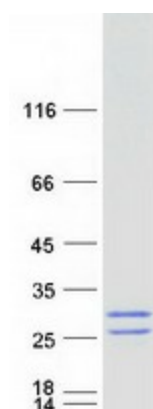
#### Product data:

Product Type:	Recombinant Proteins
Description:	Recombinant protein of human chromosome 19 open reading frame 59 (C19orf59), 1 mg
Species:	Human
Expression Host:	HEK293T
Expression cDNA Clone or AA Sequence:	>RC211156 protein sequence <span style="color: red;">Red</span> =Cloning site <span style="color: green;">Green</span> =Tags(s)  MEVEEIIYKHQEVKMQAPAFRDKKQGVSAKNQGAHDPDYENITLAFKNQDHAKGGHSRPTSQVPAQCRP PS DSTQVPCWLYRAILSLYILLALAFVLCIILSAFIMVKNAEMSKELLGFKRELWNVSNVQACEERQKRGW DSVQQSITMVRSKIDRLETTLAGIKNIDTKVQKILEVLQKMPQSSPQ  <span style="color: red;">TR</span> <span style="color: green;">TRPLEQKLISEEDLAANDILDYKDDDDKV</span>
Tag:	C-Myc/DDK
Predicted MW:	21 kDa
Concentration:	>0.05 µg/µL as determined by microplate BCA method
Purity:	> 80% as determined by SDS-PAGE and Coomassie blue staining
Buffer:	25 mM Tris-HCl, 100 mM glycine, pH 7.3, 10% glycerol
Preparation:	Recombinant protein was captured through anti-DDK affinity column followed by conventional chromatography steps.
Note:	For testing in cell culture applications, please filter before use. Note that you may experience some loss of protein during the filtration process.
Storage:	Store at -80°C.
Stability:	Stable for 12 months from the date of receipt of the product under proper storage and handling conditions. Avoid repeated freeze-thaw cycles.
RefSeq:	<u><a href="#">NP_777578</a></u>
Locus ID:	199675
UniProt ID:	<u><a href="#">Q8IX19</a></u>


[View online »](#)

RefSeq Size:	1326
Cytogenetics:	19p13.2
RefSeq ORF:	561
Synonyms:	C19orf59
Summary:	This gene encodes a single-pass transmembrane protein. Based on its expression pattern, it is speculated to be involved in regulating mast cell differentiation or immune responses. [provided by RefSeq, Jul 2008]
Protein Families:	Druggable Genome, Transmembrane

### Product images:



Coomassie blue staining of purified MCEMP1 protein (Cat# [TP311156]). The protein was produced from HEK293T cells transfected with MCEMP1 cDNA clone (Cat# [RC211156]) using MegaTran 2.0 (Cat# [TT210002]).